

## General Information About Solenoid Valve

Inner structure and categories of two way solenoid valves

### Direct acting solenoid valves

Including normal close style (N.C.) and normal open style(N.O.). The N.C. style solenoid valve stay close at power off condition. When power on, the coil yields electricity-magnetic force, which exceed the spring force and hence pulls active armature approaching to static armature, the valve becomes open; when power off, the electricity-magnetic force disappear and the active armature go back to its original place by the spring force, the valve close. The N.O. style is just opposite. These valve are normally simple structure, dependable action, fast response, high, frequency and with ≤6mm small orifice size(N.O. style ≤4mm ).

### Diaphragm pilot solenoid valves

This style valve makes main valve and pilot valve together, when power on, the coil yields electricity-magnetic force pulls active armature approaching to static armature, the pilot valve open and control the main valve to open; when power off, the electricity-magnetic force disappear and with the gravity and spring force, the active armature close the pilot valve, which control the main valve to close. The N.O. style is just opposite. These valve are normally with bigger orifice size and ≤10Bar working pressure and with zero differential working pressure.

### Piston pilot solenoid valves

Similar with piston pilot solenoid valves, but supports for higher pressure and temperature,with ≥1 Bar differential working pressure.

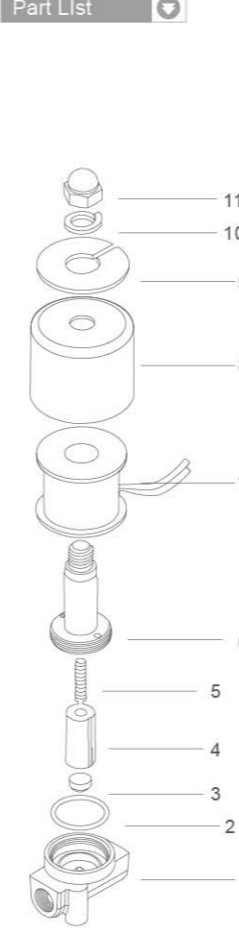
Seal Features

Material	NBR	HNBR	EPDM	VMQ	FKM	PTFE	PU
Highest working temperature	80℃	120℃	120℃	180℃	120℃	200℃	80℃
Lowest working temperature	-5℃	-10℃	-20℃	-40℃	-20℃	-50℃	-20℃
Anti-burning	×	×	×	△	◎	◎	△
Steam	×	△	◎	○	△	○	×
Oil	◎	◎	×	△	◎	◎	◎
O <sub>3</sub>	△	◎	◎	◎	◎	◎	◎
Chemical	△	○	◎	◎	◎	◎	◎
Acid	△	○	◎	△	◎	◎	×
Alkalinity	○	◎	◎	△	◎	◎	×
Water	○	○	◎	○	○	◎	◎
Wearing	○	◎	○	×	○	◎	◎
Anti distortion	○	○	○	◎	○	×	×
Tension	◎	◎	◎	×	○	×	◎

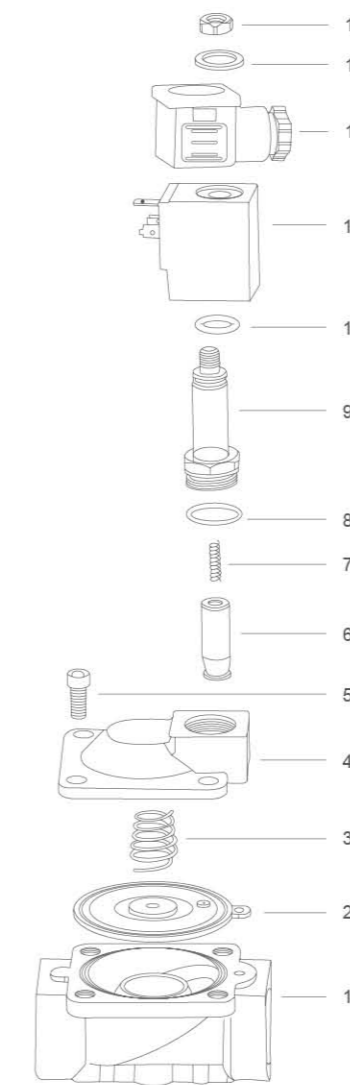
Description of the symbol: ◎ Very good ○ Good △Normal level × Not OK

## General Information About Solenoid Valve

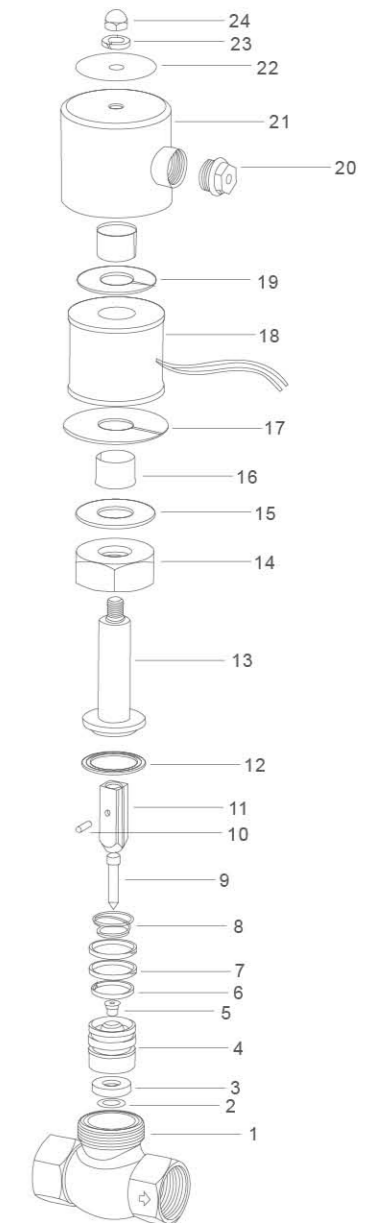
Part List



No	Designation
1	Valve body
2	O-ring
3	Seal pad
4	Pilot
5	Spring
6	Armature
7	Coil
8	Steel washer
9	Washer
10	Spring washer
11	Nut



No	Designation
1	Valve body
2	Diaphragm
3	Diaphragm spring
4	Valve cover
5	Hexagon screw
6	Pilot units
7	Plunger Spring
8	O-ring
9	Plunger tube assembly
10	O-ring
11	Coil
12	Connector
13	Gasket
14	Lock Nut



No	Designation	No	Designation
1	Valve body	13	Static armature
2	Washer	14	Nut
3	Seal pad	15	Gasket
4	Valve core	16	Bushing
5	Seal	17	Steel plate
6	Gasket	18	Coil
7	Guide ring	19	Steel plate
8	Spring	20	Nut
9	Valve needle	21	Steel cover
10	Pin	22	Min plate
11	Armature	23	Spring washer
12	Seal ring	24	Nut

### 2V Series 2/2 Solenoid Valve



Ordering Code

<b>2V</b>	<b>025</b>	<b>06</b>	<b>AC220V</b>	<b>V</b>
<b>Specification Code</b> 2V:Two-positionTwo-way Solenoid Valve	<b>Aperture of Flow Rate</b> 025:2.5mm 130:13mm 250:25mm	<b>Port Size</b> 06:G1/8" 08:G1/4" 10:G3/8" 15:G1/2" 20:G3/4" 25:G1"	<b>Standard Voltage</b> DC12V DC24V AC24V 50Hz/60Hz AC110V 50Hz/60Hz AC220V 50Hz/60Hz AC380V 50Hz/60Hz	<b>Oil Seal Code</b> Blank:NBR V:VITON(For High temperature)

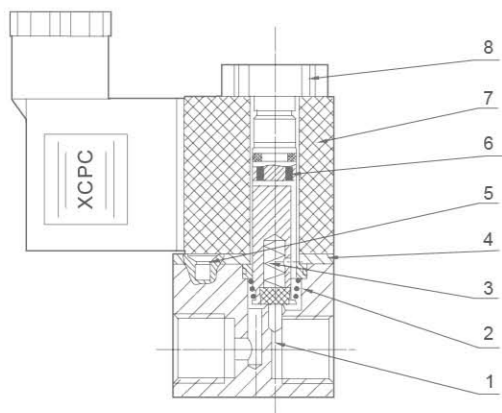
Graphic Symbol



Specification

Model	2V025-06	2V025-08	2V130-10	2V130-15	2V250-20	2V250-25
Working Medium	Air,Water,Oil					
Motion Pattern	Direct Drive Type			Guide Type		
Type	Normal Close Type					
Aperture of Flow Rate(mm)	2.5		13		25	
CV Value	0.23		6.2		23	
Port Size	G1/8"	G1/4"	G3/8"	G1/2"	G3/4"	G1"
Operation Fluid Viscosity	20 CST (Below)					
Working-pressure	Air,Water,Oil 0~0.8MPa			Air,Water,Oil 0.05~0.7MPa		
Max. Pressure Resistance	12kgf/cm <sup>2</sup>			10.5kgf/cm <sup>2</sup>		
Operating Temperature Range	-10~+80°C					
Voltage Range	±10%					
Protect Class	IP65					
Power Consumption	AC:7VA860Hz PC:6W					
Insulation	F Class					
Material of Body	Aluminum or Brass			Brass		
Material of Oil Seal	NBR or VITON			NBR		
Shortest Excitation Time	0.05 Second					

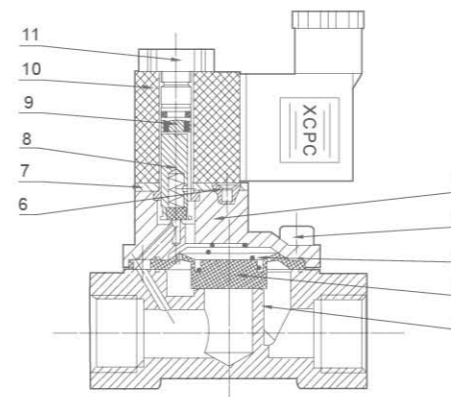
Internal structure



No	Name
1	Body Of Valve
2	Spring
3	Assembly Of Iron Core
4	Assembly Of Iron Core
5	Cruciform Slot Screw
6	Platen
7	Coil
8	Nut

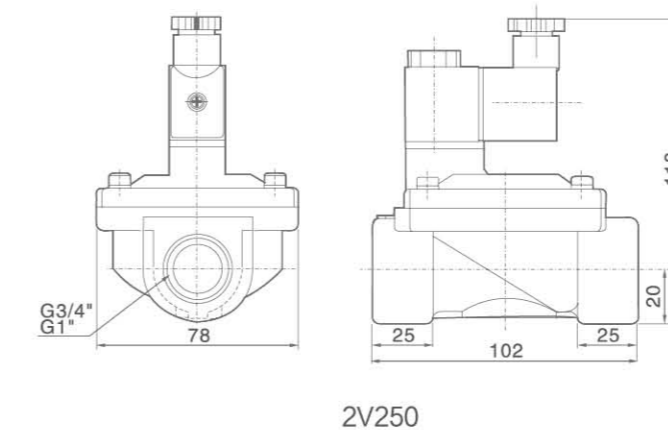
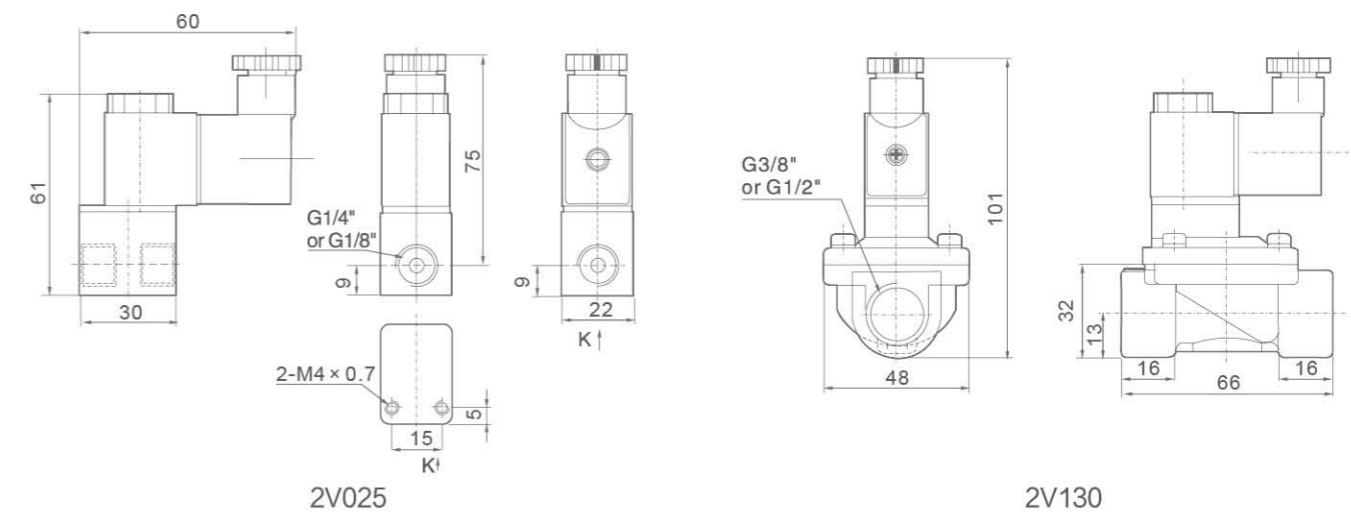
### 2V Series 2/2 Solenoid Valve

Internal structure



No	Name
1	Body Of Valve
2	Diaphragm
3	Spring
4	Socket Hexagon Screws
5	Cover board
6	Cruciform Slot Screw
7	Platen
8	Assembly Of Iron Core
9	Assembly Of Iron Core
10	Coil
11	Nut

Overall Dimensions



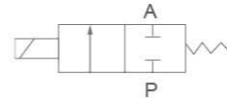
### 2P Series 2/2 Solenoid Valve (Plastic Steel Type)



Ordering Code

<b>2P</b>	<b>025</b>	<b>06</b>	<b>AC220V</b>	<b>□</b>
<b>Specification Code</b> 2P:Two-position Two-way Solenoid Valve (Reinforced plastic steel type)	<b>Aperture of Flow Rate</b> 025:2.5mm	<b>Port Size</b> 06:G1/8"	<b>Standard Voltage</b> DC12V DC24V AC24V 50Hz/60Hz AC110V 50Hz/60Hz AC220V 50Hz/60Hz AC380V 50Hz/60Hz	<b>Wiring Form</b> Blank:Lead wire Type D: Joint Connector

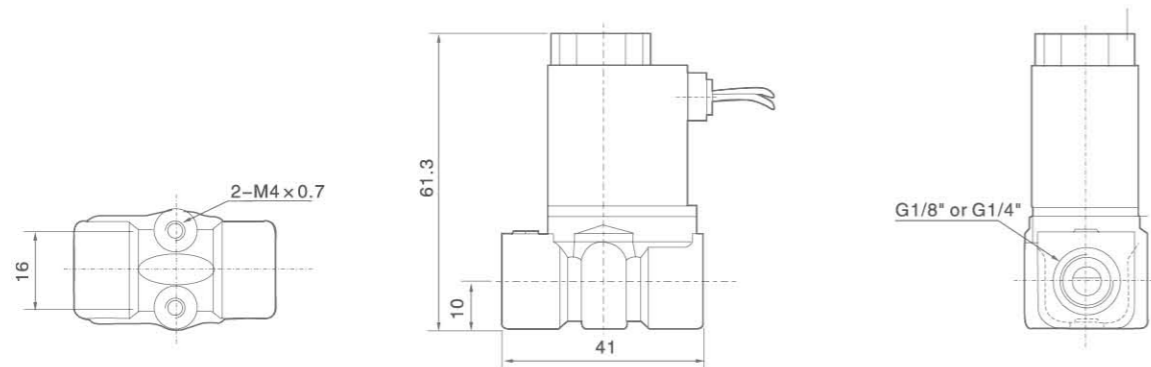
Graphic Symbol



Specification

Model	2V025-06	2V025-08
Working Medium	Air,Water,Oil,gas	
Motion Pattern	Direct Drive Type	
Type	Normal Close Type	
Aperture of Flow Rate(mm)	2.5	
CV Value	0.23	
Port Size	G1/8"	G1/4"
Operation Fluid Viscosity	20 CST (Below)	
Working-pressure	0~0.7MPa	
Max. Pressure Resistance	1.0MPa	
Operating Temperature Range	-5~+80℃	
Voltage Range	±10%	
Material of Body	Engineering Plastic Steel	
Material of Oil Seal	NBR EPDM or VITON	

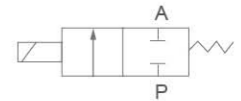
Overall Dimensions



### 2W(UD) Series 2/2 Direct Drive Type Solenoid Valve (Small Aperture)



Graphic Symbol



Ordering Code

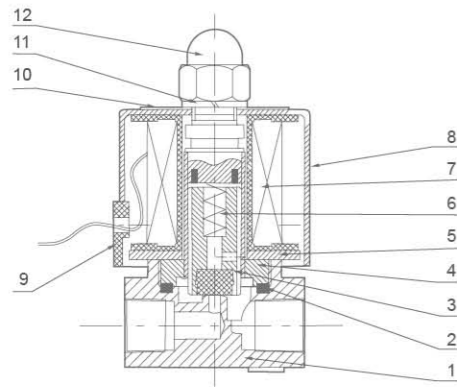
<b>2W</b>	<b>025</b>	<b>08</b>	<b>F</b>	<b>AC220V</b>	<b>□</b>
<b>Specification Code</b> 2W:Two-position Two-way solenoid valve direct drive type 2WH:Two-position Two-way solenoid valve(High pressure direct drive Type)	<b>Aperture of Flow Rate</b> 012:1.2mm 020:2.0mm 025:2.5mm 040:4.0mm	<b>Port Size</b> 08:G1/8" 08:G1/4" 10:G3/8"	<b>Initial Estate</b> Blank:Pipe Jion Ttype F: Flange Type	<b>Standard Voltage</b> DC12V DC24V AC24V 50Hz/60Hz AC36V 50Hz/60Hz AC110V 50Hz/60Hz AC220V 50Hz/60Hz AC380V 50Hz/60Hz	<b>Wiring Form</b> Blank:Lead Wire Type D:Joint Connector E:Blast-proof Coil G:Water-proof Coil

Specification

Model	2W025-06	2W025-08	2W040-10	2WH012-06	2WH012-08	2WH020-10
Working Medium	Air,Water,Oil,Gas					
Motion Pattern	Direct Drive Type					
Type	Normal Close Type					
Aperture of Flow Rate(mm)	2.5	4	1.2	2		
CV Value	0.23	0.60	0.05	0.15		
Port Size	G1/8"	G1/4"	G3/8"	G1/8"	G1/4"	G3/8"
Operation Fluid Viscosity	20 CST (Below)					
Working-pressure	Air,Water,Oil,Gas:0~0.7MPa			Air,Water,Oil:0~2.0MPa		
Max. Pressure Resistance	1.0			3.5		
Operating Temperature Range	-5~+80℃					
Voltage Range	±10%					
Material of Body	Brass					
Material of Oil Seal	NBR EPDM or VITON					

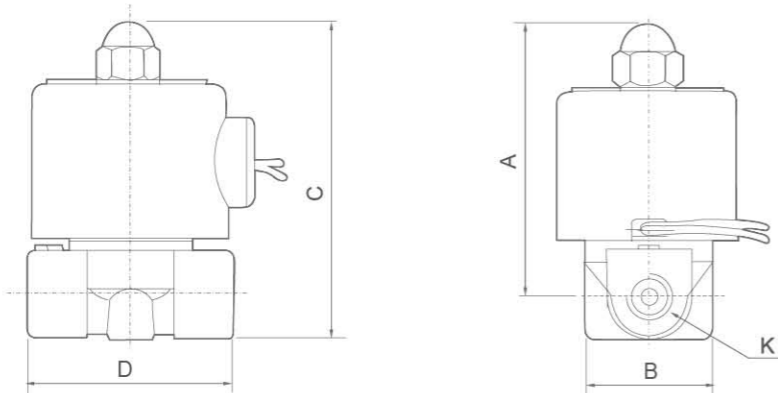
### 2W(UD) Aperture 2/2 Direct Drive Type Solenoid Valve(Small Aperture)

Internal structure



No	Name
1	Body Of Valve
2	O-ring
3	Assembly Of Iron Core
4	Assembly Of Iron Core
5	Magnetic Plate
6	Spring
7	Assembly Of Coil
8	Iron Cover
9	Cord-locks
10	Name Plate
11	Gasket
12	Head Cover Nut

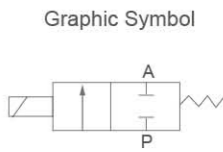
Overall Dimensions



Dimension Sheet

Symbol/Model	A	B	C	D	K(PT)
2W025-06	66	30.3	75	41.5	G1/8"
2W025-08	66	30.3	75	41.5	G1/4"
2W040-10	74	32.2	85.5	53	G3/8"
2WH012-06	66	30.3	75	40.5	G1/8"
2WH012-08	66	30.3	75	40.5	G1/4"
2WH020-10	74	32.3	85.5	53	G3/8"

### 2W(UW) Series 2/2 Direct Drive Type Solenoid Valve(Large Aperture)



Ordering Code

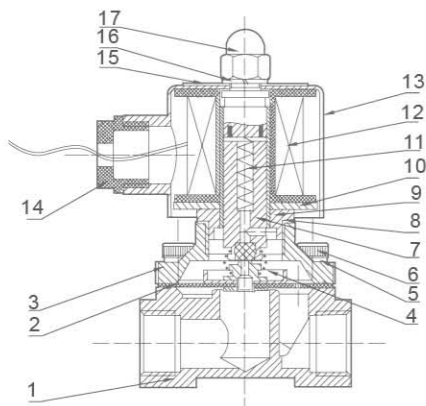
<b>2W</b>	<b>160</b>	<b>15</b>	<b>F</b>	<b>AC220V</b>	
<b>Specification Code</b> 2W:Two-position two-way solenoid valve (direct drive type)	<b>Aperture of Flow Rate</b> 160:16mm 200:20mm 250:25mm 350:35mm 500:50mm	<b>Port Size</b> 10:G3/8" 15:G1/2" 20:G3/4" 25:G1" 35:G1 1/4" 40:G1 1/2" 50:G2"	<b>Initial Estate</b> Blank:Pipe Jiont Type F: Flange Type	<b>Standard Voltage</b> DC12V DC24V AC24V 50Hz/60Hz AC36V 50Hz/60Hz AC110V 50Hz/60Hz AC220V 50Hz/60Hz AC380V 50Hz/60Hz	<b>Wiring Form</b> Blank:Lead Wire Type D: Joint Connector

Specification

Model	2W160-10	2W160-15	2W200-20	2W250-25	2W350-35	2W400-40	2W500-50
Working Medium	Air,Water,Oil,gas						
Motion Pattern	Direct Drive Type						
Type	Normal Close Type						
Aperture of Flow Rate(mm)	16	20	25	35	40	50	
CV Value	4.8	7.6	12	24	29	48	
Port Size	G3/8"	G1/2"	G3/4"	G1"	G1 1/4"	G1 1/2"	G2"
Operation Fluid Viscosity	20 CST (Below)						
Working-pressure	Air:0~0.7MPa Water:0~0.5MPa Oil:0~0.5MPa Gas: 0~0.7MPa						
Max. Pressure Resistance	1.0MPa						
Operating Temperature Range	-5~+80℃						
Voltage Range	±10%						
Material of Body	Brass						
Material of Oil Seal	NBR EPDM or VITON						

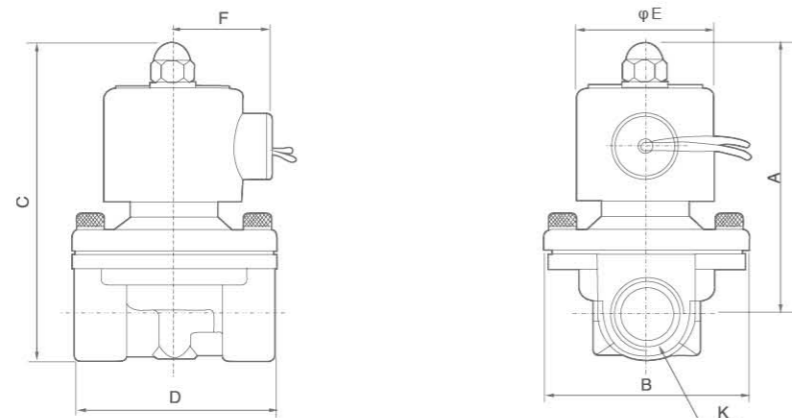
### 2W(UW) Series 2/2 Direct Drive Type Solenoid Valve(Large Aperture)

Internal structure



NO	Name	NO	Name
1	Body Of Valve	10	Magnetic Plate
2	Assembly Of Diaphragm	11	Spring
3	Valve Cover	12	Assembly Of Coil
4	Pull Spring	13	Iron Cover
5	Gasket	14	Cord-locks
6	Socket Hexagon Screws	15	Name Plate
7	Assembly Of Iron Core	16	Gasket
8	Seal Gasket	17	Head Cover Nut
9	Assembly Of Iron Core		

Overall Dimensions



2W(Large Aperture)

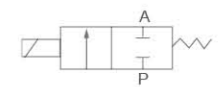
Dimension Sheet

Model	A	B	C	D	E	F	K
2W160-10	101.5	57	117	67	50	36	G3/8"
2W160-15	101.5	57	117	67	50	36	G1/2"
2W200-20	107	57	123.5	72	50	36	G3/4"
2W250-25	111.5	73.5	134.5	92	50	36	G1"
2W350-35	142	95	172	125	70.5	56	G1 1/4"
2W400-40	142	95	172	125	70.5	56	G1 1/2"
2W500-50	172	123	209	168	70.5	56	G2"

### 2S Series Stainless Steel Solenoid Valve



Graphic Symbol



Ordering Code

2S

025

08

F

AC220V

□

**Specification Code**

2S:Two-position two-way solenoid valve (Stainless steel direct drive type)

**Aperture of Flow Rate**

025:2.5mm  
040:4.0mm  
160:16mm  
200:20mm  
250:25mm  
350:35mm  
400:40mm  
500:50mm

**Port Size**

08:G1/4"  
10:G3/8"  
15:G1/2"  
20:G3/4"  
25:G1"  
35:G1 1/4"  
40:G1 1/2"  
50:G2"

**Initial Estate**

Blank:Pipe Jiont type  
F: Flange Type

**Standard Voltage**

DC12V DC24V  
AC24V 50Hz/60Hz  
AC36V 50Hz/60Hz  
AC110V 50Hz/60Hz  
AC220V 50Hz/60Hz  
AC380V 50Hz/60Hz

**Wiring Form**

Blank:Lead Wire Type  
D:Joint Connector  
E:Blast-proof Coil  
G:Water-proof Coil

Specification

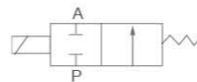
Model	2S025-06(08)	2S040-10	2S160-10(15)	2S200-20	2S250-25	2S350-35(40)	2S500-50
Working Medium	Air,Water,Oil,Gas						
Motion Pattern	Direct Drive Type						
Type	Normal Close Type						
Aperture of Flow Rate(mm)	2.5	5	16	20	35	40	50
CV Value	0.23	0.60	4.8	7.6	24	29	48
Port Size	G1/8" G1/4"	G3/8"	G3/8" G1/2"	G3/4"	G1"	G1 1/4" G1 1/2"	G2"
Operation Fluid Viscosity	20 CST (Below)						
Working-pressure	Air:0~0.7MPa Water:0~0.5MPa, Air:0~0.7MPa, Oil:0~0.5MPa, Gas:0~0.7MPa						
Max. Pressure Resistance	1.05MPa						
Operating Temperature Range	-5~+80°C						
Voltage Range	±10%						
Material of Body	Stainless steel						
Material of Oil Seal	NBR EPDM or VITON						

Note:2S Series Solenoid Valve's Oevrrall Dimension, Flow Chart and Inner Structure all Same as 2W Series.

### 2W/2S Normal Open Series Solenoid Valve



Graphic Symbol



Ordering Code

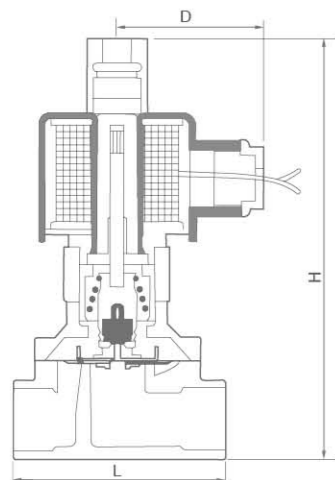
**2W** — **160** — **10** — **NO** — **AC220V** —

Specification Code	Aperture of Flow Rate	Port Size	Initial Estate	Standard Voltage	Wiring Form
2W:Two-position two-way solenoid valve (direct drive type) 2S:Stainless steel two position two way solenoid valve(direct drive type)	040:4.0mm 160:16mm 200:20mm 250:25mm	10:G3/8" 15:G1/2" 20:G3/4" 25:G1"	NO: Normal Open	DC12V DC24V AC24V 50Hz/60Hz AC36V 50Hz/60Hz AC110V 50Hz/60Hz AC220V 50Hz/60Hz AC380V 50Hz/60Hz	Blank:Lead Wire Type D:Joint Connector E:Blast-proof Coil G:Water-proof Coil

Specification

Model	2W/2S(040-10NO)	2W/2S(160-10NO)	2W/2S(160-15NO)	2W/2S(200-20NO)	2W/2S(250-25NO)
Working Medium	Air,Water,Oil,Gas				
Motion Pattern	Direct Drive Type				
Type	Normal Open Type				
Aperture of Flow Rate(mm)	4	16	16	20	25
CV Value	0.6	4.8	4.8	7.6	12
Port Size	G3/8"	G3/8"	G1/2"	G3/4"	G1
Operation Fluid Viscosity	20 CST (Below)				
Working-pressure	Water:0~0.5MPa Air:0~0.7MPa Oil:0~0.5MPa Gas: 0~0.7MPa				
Max. Pressure Resistance	1.05MPa				
Operating Temperature Range	-5~+80℃				
Voltage Range	±10%				
Material of Body	2W: Brass; 2S: Stainless steel				
Material of Oil Seal	NBR EPDM or VITON				

Overall Dimensions



Dimension Sheet

Model	L	H	D
2W040-10NO	53	105	54
2W160-10NO	69	116	62
2W160-15NO	69	116	62
2W200-20NO	73	127	62
2W250-25NO	99	135	62

### 2L(US) Series 2/2 Solenoid Valve

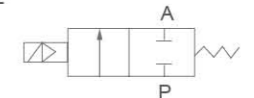


Ordering Code

**2L** — **170** — **15** — **AC220V**

Specification Code	Aperture of Flow Rate	Port Size	Standard Voltage
2L:Steam Type Two-position Two-way Solenoid Valve	170:17mm 200:22mm 300:30mm 500:50mm	10:G3/8" 15:G1/2" 20:G3/4" 25:G1" 35:G1/4" 40:G1/2" 50:G2"	DC12V DC24V AC24V 50Hz/60Hz AC36V 50Hz/60Hz AC110V 50Hz/60Hz AC220V 50Hz/60Hz AC380V 50Hz/60Hz

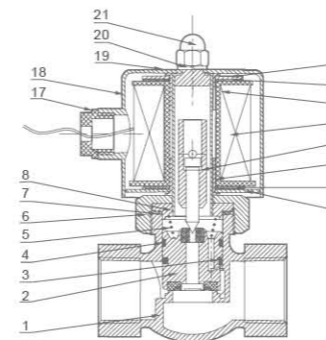
Graphic Symbol



Specification

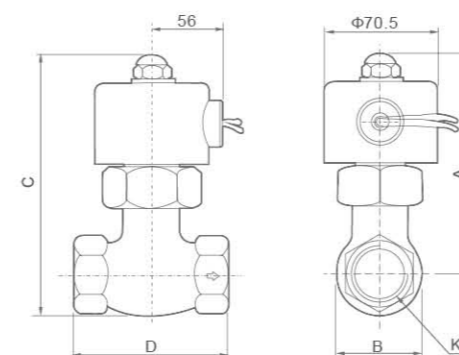
Model	2L170-10	2L170-15	2L170-20	2L200-25	2L300-35	2L300-40	2L500-50
Working Medium	Air, Water, Steam						
Motion Pattern	Guide Type						
Type	Normal Close Type						
Aperture of Flow Rate(mm)	17	22	30	50			
CV Value	4.8	12	20	48			
Port Size	G3/8"	G1/2"	G3/4"	G1"	G1/4"	G1/2"	G2"
Operation Fluid Viscosity	20 CST (Below)						
Working-pressure	Air, Water, Steam:0.1~1.5MPa						
Max. Pressure Resistance	2.25MPa						
Operating Temperature Range	-5~+180℃						
Voltage Range	±10%						
Material of Body	Brass						
Material of Oil Seal	PTFE						

Internal structure



No	Name	No	Name	No	Name
1	Body Of Valve	8	Assembly of Iron Core	15	Gasket
2	Assembly Of Piston	9	Magnetic Plate	16	Magnetic Plate
3	Springiness Spacer	10	Gasket	17	Cord-locks
4	Wear Strip	11	Bush	18	Iron Cover
5	Spring	12	Assembly Of Iron Core	19	Name Plate
6	Nut	13	Assembly Of Coil	21	Gasket
7	O-ring	14	Bush	21	Head Cover Nut

Overall Dimensions



Dimension Sheet

Model	A	B	C	D	K
2L170-10	125	38	146	76	G3/8"
2L170-15	125	42	146	81	G1/2"
2L170-20	125	47	146	84	G3/4"
2L200-25	136	54	162	91.5	G1"
2L300-35	148	76	185	111	G1/4"
2L300-40	148	76	185	111	G1/2"
2L500-50	176	88	223	164	G2"

PU220 Series 2/2 Solenoid Valve(Direct Drive Type)



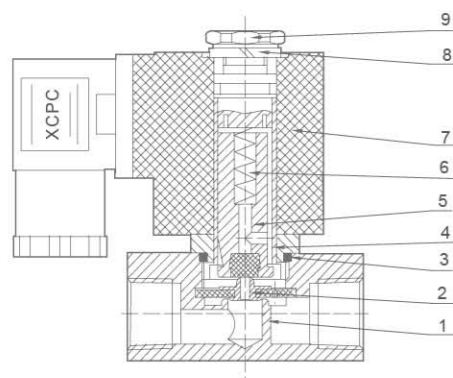
Ordering Code

<b>PU</b>	<b>220</b>	<b>02</b>	<b>A</b>	<b>AC220V</b>	<b>T</b>
<b>Specification Code</b> PU:Two -position Two -way solenoid valve	<b>Motion Patten</b> 220:Direct Drive Type	<b>Port Size</b> 01:G1/8" 02:G1/4" 03:G3/8" 04:G1/2" 06:G3/4" 08:G1" 12:G1 1/4" 14:G1 1/2" 20:G2"	<b>Initial Estate</b> A: Large Flux AR: Small Aperture Direct Drive F: Flange Type	<b>Standard Voltage</b> AC220V AC110V DC12V DC24V	<b>Wiring Form</b> Blank:Standard Coil T:Timer Coil

Specification

Model	PU220-01AR	PU220-02AR	PU220-03AR	PU220-03A	PU220-04AR	PU220-04A	PU220-06A	PU220-08A
Working Medium	Air, Water, Oil							
Motion Pattern	220:Direct Drive Type/225:Guide Type							
Type	Normal Close Type							
Aperture of Flow Rate(mm)	1.5	2.3	8	13	8	13	20	25
CV Value	0.10	0.18	1.00	4.00	1.00	4.00	8.60	11.00
Joint Pipe Bore	G1/8"	G1/4"	G3/8"	G3/8"	G1/2"	G1/2"	G3/4"	G1"
Operation Fluid Viscosity	50 CST							
Working-pressure	0~0.7MPa							
Max. Pressure Resistance	1.05MPa							
Operating Temperature Range	-5~+80℃							

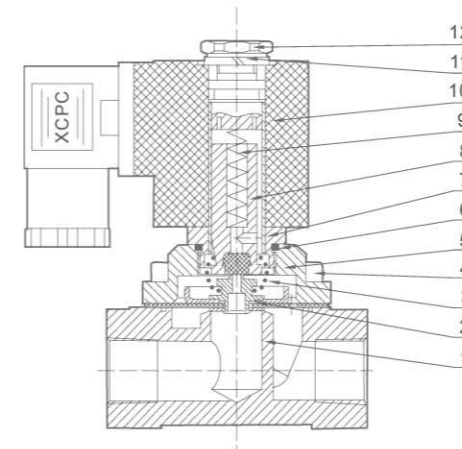
Internal structure



NO	Name
1	Body Of Valve
2	Assembly of Diaphragm
3	O-ring
4	Assembly Of Iron Core
5	Assembly Of Iron Core
6	Spring
7	Coil
8	Gasket
9	Nut

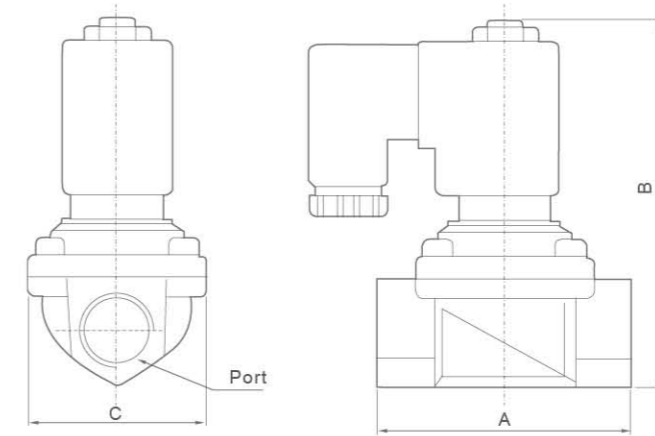
PU220 Series 2/2 Solenoid Valve(Direct Drive Type)

Internal structure



No	Name	No	Name
1	Body Of Valve	7	Assembly Of Iron Core
2	Assembly Of Diaphragm	8	Assembly Of Iron Core
3	Pull Spring	9	Spring
4	Socket Hexagon Screws	10	Coil
5	Valve Cover	11	Gasket
6	O-ring	12	Nut

Overall Dimensions



Dimension Sheet

Model	Port	A	B	C
PU220-01AR	G1/8"	22	72	22
PU220-02AR	G1/4"	35	72	25.4
PU220-03AR	G3/8"	55	79.5	30
PU220-03A	G3/8"	65.5	101	48
PU220-04A	G1/2"	65.5	101	48
PU220-06A	G3/4"	71	107	58
PU220-08A	G1"	97	120	70



### VX Series 2/2 Solenoid Valve



Ordering Code

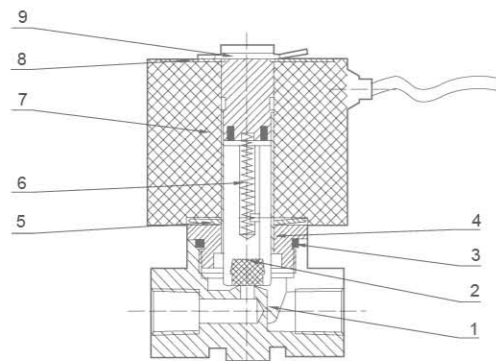
VX2120	08	AC220V
Specification Code	Port Size	Standard Voltage
	06:G1/8"	DC12V DC24V
	08:G1/4"	AC24V 50Hz/60Hz
	10:G3/8"	AC110V 50Hz/60Hz
	15:G1/2"	AC220V 50Hz/60Hz
		AC380V 50Hz/60Hz



Specification

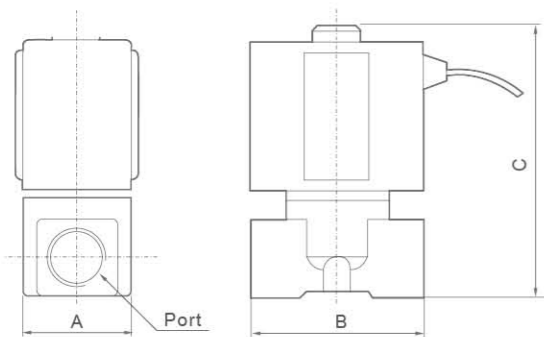
Model	VX2120-06	VX2120-08	VX2120-10	VX2120-15
Working Medium	Air, Water, Steam			
Motion Pattern	Direct Drive Type			
Type	Normal Close Type			
Working-pressure	0~1.0MPa			
Aperture of Flow Rate(mm)	3		10	13
Port Size	G1/8"	G1/4"	G3/8"	G1/2"
Operating Temperature Range	-5~+150°C		-5~+80°C	
Material of Oil Seal	VITON		NBR	

Internal structure



No	Name
1	Body Of Valve
2	Assembly Of Iron Core
3	O-ring
4	Assembly Of Iron Core
5	Spring
6	Spring
7	Coil
8	Name Plate
9	Clip

Overall Dimensions



Dimension Sheet

Model	Port	A	B	C
VX2120-06	G1/8"	26	40	66
VX2120-08	G1/4"	26	40	66
VX2120-10	G3/8"	40	48	80
VX2120-15	G1/2"	47	66	88

### VXF Series Solenoid Valve



Ordering Code

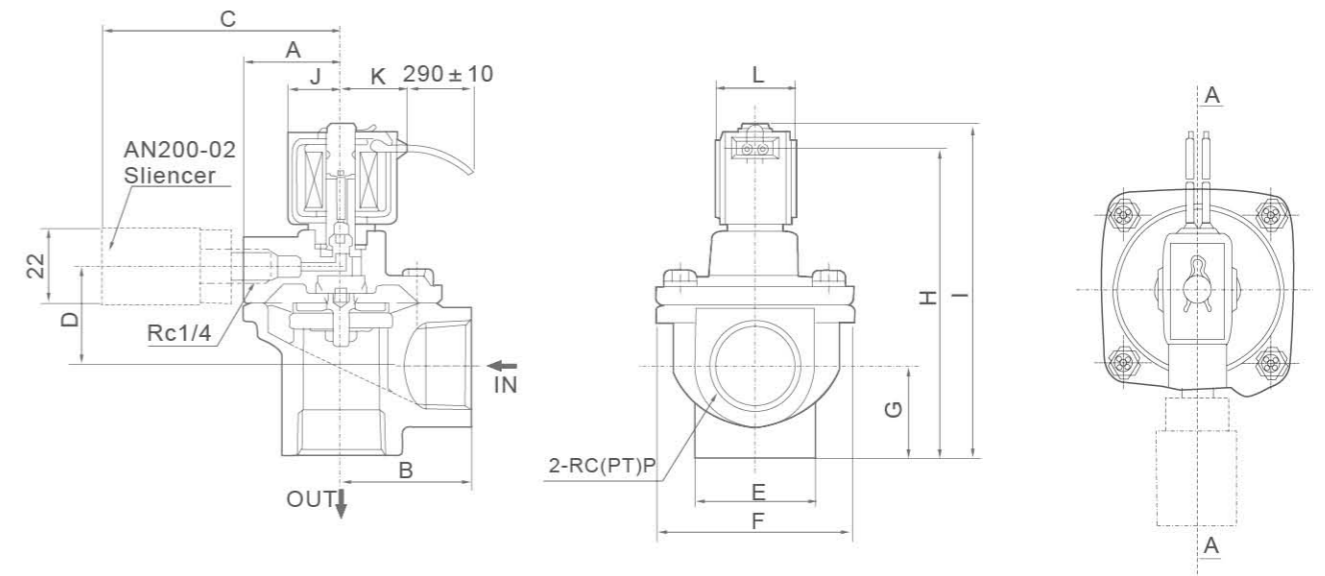
VXF2150	06	AC220V	□
Specification Code	Port Size	Standard Voltage	Wiring Form
	06:G3/4"	DC12V DC24V	Blank:Lead
	10:G1"	AC24V 50Hz/60Hz	Wire Type
	14:G1/2"	AC36V 50Hz/60Hz	D:Joint
		AC110V 50Hz/60Hz	Connector
		AC220V 50Hz/60Hz	
		AC380V 50Hz/60Hz	



Specification

Model	VXF2150-06	VX2160-10	VX2280-14
Port Size	G3/4"	G1"	G1/2"
Max. Operating Differential Pressure	1.0MPa		
Min.Operating Differential Pressure	0.031MPa		
Section (mm)	20	27	40
Effective Area of Section	170	330	810
CV Value	9.5	18.5	45
Exhaust Orifice	Rc(PT)1/4		

Overall Dimensions



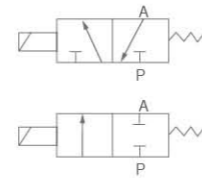
Dimension Sheet

Model	A	B	C	D	E	F	G	H	I	J	K	L	P
VXF2150	33	40	85	32.5	36	66	25	103	110	20	23	30	G3/4"
VXF2160	37	48	89	38	45	74	33.5	118	125	20	23	30	G1
VXF2280	28	68	81	58	110	110	62.5	174	184	23	25	35	G1-1/2"

XC22/23 Series Solenoid Valve



Graphic Symbol



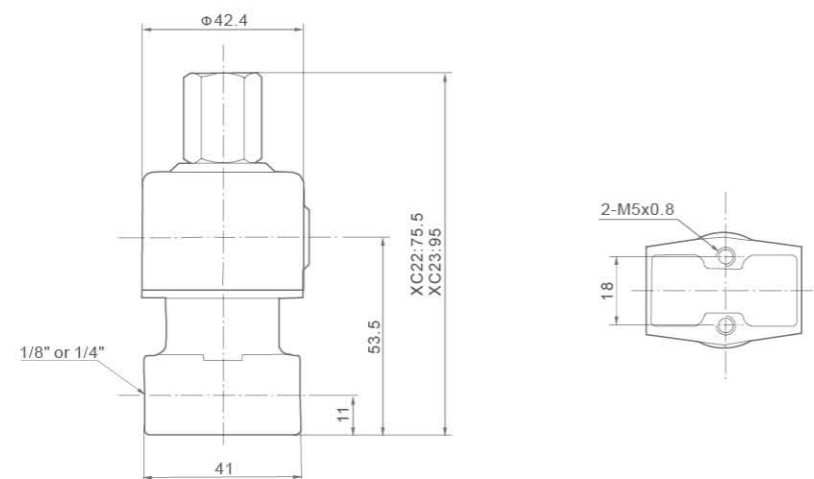
Ordering Code

<b>XC</b>	<b>23</b>	<b>06</b>	<b>AC220V</b>
Factory Code	The Position counting 22:Two position two way 23:Two position three way	Port Size 06:G1/8" 08:G1/4"	Standard Voltage DC12V DC24V AC24V 50/60Hz AC36V 50/60Hz AC110V 50/60Hz AC220V 50/60Hz AC380V 50/60Hz

Specification

Model	XC22-06	XC22-08	XC23-06	XC23-08
Working Medium	Air, Water, Oil			
Aperture of Flow Rate(mm)	1.6	2.4	3.2	4.0
CV Value	0.10	0.21	0.33	0.43
Port size	G1/8"	G1/4"	G1/8"	G1/4"
Working-pressure Range	0~1.5	0~1.0	0~0.7	0~0.5
Voltage Range	±10%			
Material of oil seal	NBR or VITON			

Overall Dimensions



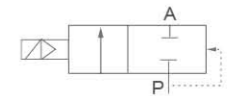
XC5404 Series High Pressure, High Temperature Solenoid Valve



Ordering Code

<b>XC</b>	<b>5404</b>	<b>04</b>	<b>AC220V</b>	<b>□</b>
Factory Code	Model	Port Size 02:G1/4" 04:G1/2" 06:G3/4" 08:G1"	Standard Voltage DC12V DC24V AC24V 50/60Hz AC36V 50/60Hz AC110V 50/60Hz AC220V 50/60Hz AC380V 50/60Hz	Wiring Form Blank:Lead Wire Type D:Joint Connector

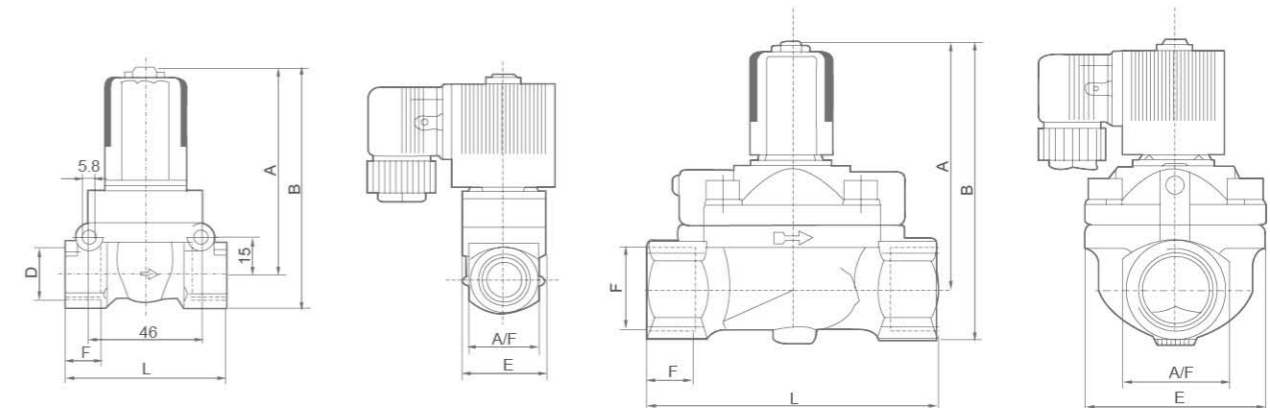
Graphic Symbol



Specification

Model	XC5404-04	XC5404-06	XC5404-08
Working Medium	Air, Water, Oil		
Motion Pattern	Guide Type		
Type	Normal Close Type		
Aperture of Flow Rate(mm)	12	25	25
KV Value	2.0	5.0	10.0
Joint Pipe Bore	G1/2"	G3/4"	G1"
Working-pressure(kgf/cm <sup>2</sup> )	Gas:1~50,Liquid:1~50	Gas:1~40,Liquid:1~25	Gas:1~40, Liquid:1~25
Max. Pressure Resistance(kgf/cm <sup>2</sup> )	75	60	
Operating Temperature Range(°C)	-5~+150°C		
Voltage Range	±10%		
Protect Class	IP65		
Power Consumption	AC:5.5VA DC:9W		
Insulation	F Class		
Material of Body	Brass		
Material of Oil Seal	PTFE		

Overall Dimensions



Dimension Sheet

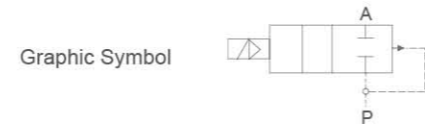
Model	Bore(mm)	Port	A	B	F	E	L	A/F
XC5404-04	12.0	G1/2"	83.0	98	14	32	63	27
XC5404-06	20.0	G3/4"	99.5	125	16	60	92	40
XC5404-08	25.0	G1"	99.5	125	16	60	92	40

### XC6213 Series Diaphragm Type Solenoid Valve



Ordering Code

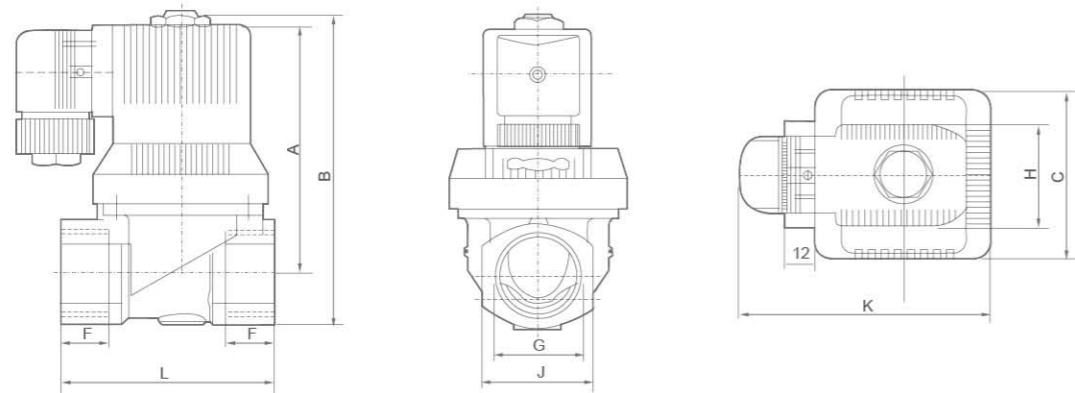
<b>XC</b>	<b>6213</b>	<b>04</b>	<b>AC220V</b>	<input type="checkbox"/>
<b>Factory Code</b>	<b>Model</b>	<b>Port Size</b>	<b>Standard Voltage</b>	<b>Wiring Form</b>
		02:G1/4"	DC12V	Blank:Lead Wire Type
		03:G3/8"	DC24V	D:Joint Connector
		04:G1/2"	AC36V 50/60Hz	
		06:G3/4"	AC24V 50/60Hz	
		08:G1"	AC110V 50/60Hz	
			AC220V 50/60Hz	
			AC380V 50/60Hz	



Specification

Model	XC6213-02	XC6213-03	XC6213-04	XC6213-04	XC6213-06	XC6213-06	XC6213-08
Inside Nominal Diameter(mm)	10		14		25		
Port Size	G1/4"	G3/8"	G1/2"	G1/2"	G3/4"	G3/4"	G1"
Working Pressure(MPa)	0.03~1.0						
Environment Temperature(°C)	-10~+55						
Medium Temperature(°C)	-10~+90						
Kv Value(m³/h)	2	3.6	8.3	8.3	11	11	
Power AC(VA)	14						
Consumptin DC(W)	8						
Change Frequency(Hz)	≥1			≥0.5			
Power/Voltage	AC: 50Hz 24V,36V,110V,220V, DC:24V,12V						

Overall Dimensions



Dimension Sheet

Model	G	C	F	L	J	A	B	H	K
XC6213-02	G1/4"	38	14	50	26	71	85	35	71
XC6213-03	G3/8"	38	14	50	26	71	85	35	71
XC6213-04	G1/2"	38	14	50	26	71	85	35	71
XC6213-04	G1/2"	45	16	58	31	82	96	35	80
XC6213-06	G3/4"	45	16	58	31	82	96	35	80
XC6213-06	G3/4"	65	18	80.5	41	96	117	35	90
XC6213-08	G1"	65	18	80.5	41	96	117	35	90

### 2Q Series Air Control Two-Way Valve



Ordering Code

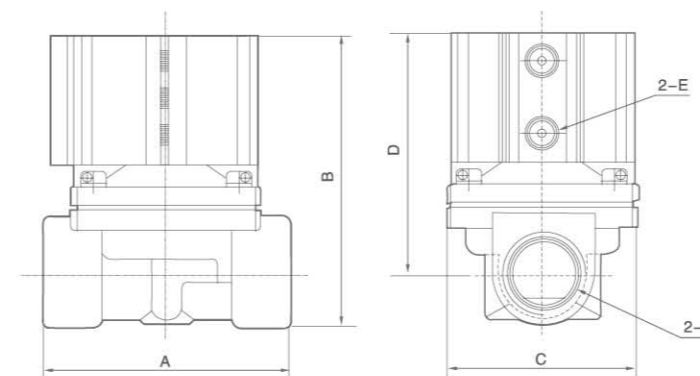
<b>2Q</b>	<b>200</b>	<b>25</b>
<b>Specification Code</b>	<b>Aperture of Flow Rate</b>	<b>Port Size</b>
2Q:Two-position two-way Air Control valve	160:16mm 200:22mm 250:25mm 400:40mm 500:50mm	15:G1/2" 20:G3/4" 25:G1" 40:G1 1/2" 50:G2"



Specification

Model	2Q160-15	2Q200-20	2Q250-25	2Q400-40	2Q500-50
Working Medium	Air, Water, Oil, Gas				
Motion Pattern	Direct Drive				
Aperture of Flow Rate(mm)	16	20	25	40	50
CV Value	4.8	12	7.6	29	48
Joint Pipe Bore	G1/2"	G3/4"	G1"	G1-1/2"	G2"
Operation Fluid Viscosity	50 CST(Below)				
Working-pressure Range	0~0.7Mpa				
Max. Pressure Resistance	1.05Mpa				
Control Pressure Range	0.3~0.6Mpa				
Operating Temperature Range	-5~100°C				
Material of Body	Brass				
Material of Oil Seal	PTFE				
Control Joint Pipe Bore	2-M5	2-G1/8"	2-G1/8"	2-G1/4"	2-G1/4"

Overall Dimensions



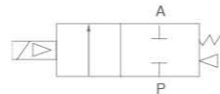
Dimension Sheet

Model	A	B	C	D	E	F
2Q160-15	67	89	57	75	M5	G1/2"
2Q200-20	99	116	57	95	G1/8"	G3/4"
2Q250-25	99	116	57	95	G1/8"	G1"
2Q350-35	127	123	93	97	G1/4"	G1-1/4"
2Q400-40	123	146	95	116	G1/4"	G1-1/2"
2Q500-50	170	155	118	114	G1/4"	G2"

**SLP Series 2/2 Solenoid Valve(Normal Close)**



Graphic Symbol



Ordering Code

<b>SLP</b>	<b>06</b>		<b>E2</b>	<b>3L</b>	<b>S1</b>	<b>H</b>
<b>SLP Series</b>	<b>Port Size</b> 06: G1/8" 08: G1/4" 10: G3/8" 15: G1/2" 20: G3/4" 25: G1" 35: G1-1/4" 40: G1-1/2" 50: G2" F: Flange	<b>Seal Material</b> Blank: NBR V: VITON E: EPDM	<b>Voltage</b> E1: AC110V E2: AC220V E3: AC380V E4: DC24V E5: DC12V E6: AC36V E7: AC24V E8: DC110V E9: DC48V E10: DC36V	<b>Orifice(mm)</b> 1L: 1.0 1.5L: 1.5 2.5L: 2.5 3L: 3.0 4L: 4.0 5L: 5.0 6L: 6.0 10L: 10.0 10.5L: 10.5 13L: 13.0 20L: 20.0 25L: 25.0 35L: 35.0 40L: 40.0 50L: 50.0	<b>Body material</b> Blank: Brass S1: SS316	<b>Control style</b> Blank: Normal close H: Normal open

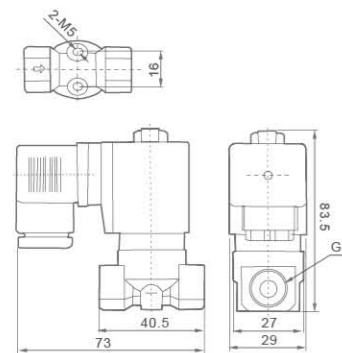
- SLP series, 2 port, 2 position, 1/8" port size, NBR Seal, AC110V, Orifice: 3mm, Brass valve body, normal close, model: SLP06E1-3L
- SLP series, 2 port, 2 position, 3/8" port size, VITON Seal, AC220V, Orifice: 13mm, SS316 valve body, normal open, model: SLP10VE2-13LS1H

Product Features

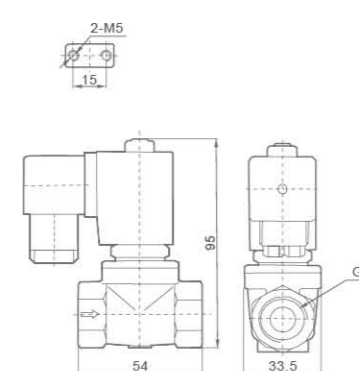
- Normal Close, available body: brass, SS316.
- Multiple seals are available for different medium.
- Wide size range from 1/8" to 2" with both thread and flange connection.
- Diaphragm pilot solenoid valve, with lower working pressure.

Overall Dimensions

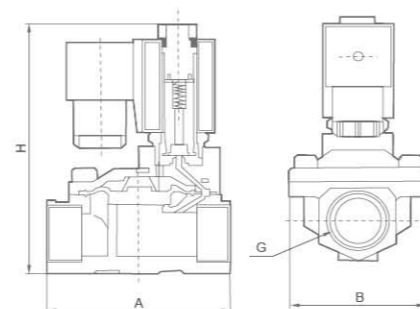
Φ3mm, Φ4mm, G1/8", G1/4", G3/8"



Φ10.5mm, G1/4", G3/8", G1/2"



big orifice



**SLP Series 2/2 Solenoid Valve(Normal Close)**

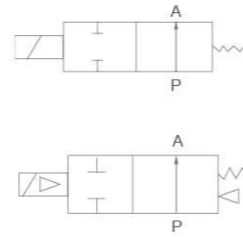
Specification

Port size (G)	Orifice (mm)	CV value	Pressure difference(Bar)					Max. temperature (°C)	Power		Model		Overall dimension Length × Width × Height A × B × H(mm)
			Min. pressure	Max. working pressure			AC 220		DC 24V	220VAC	50/60Hz		
				Air	Gas	Water, Hot water, Liquid						Light oil ≤20CST	
1/8"	3	0.23	0	13	13	10	80	22	13	SLP06E2-3L	SLP06E2-3LS1		
	3	0.23	0	13	13	-	130	22	13	SLP06EE2-3L	SLP06EE2-3LS1		
3/8"	3	0.23	0	13	13	10	120	22	13	SLP06VE2-3L	SLP06VE2-3LS1		
	3	0.23	0	13	13	-	130	22	13	SLP06EE2-3L	SLP06EE2-3LS1		
1/4"	10.5	1.47	0	10	10	10	80	22	13	SLP08E2-10.5L	-		
	10.5	1.47	0	10	10	-	130	22	13	SLP08EE2-10.5L	-		
	10.5	1.47	0	10	10	10	120	22	13	SLP08VE2-10.5L	-		
3/8"	3	0.3	0	13	13	10	80	22	13	SLP10E2-3L	SLP10E2-3LS1		
	3	0.3	0	13	13	10	130	22	13	SLP10EE2-3L	SLP10EE2-3LS1		
	4	0.6	0	8	8	6	80	22	13	SLP10E2-4L	SLP10E2-4LS1		
	4	0.6	0	8	8	6	130	22	13	SLP10EE2-4L	SLP10EE2-4LS1		
	4	0.6	0	8	8	6	120	22	13	SLP10VE2-4L	SLP10VE2-4LS1		
	10.5	1.68	0	10	10	10	80	22	13	SLP10E2-10.5L	-		
	10.5	1.68	0	10	10	-	130	22	13	SLP10EE2-10.5L	-		
	10.5	1.68	0	10	10	10	120	22	13	SLP10VE2-10.5L	-		
	13	4.5	0.5	16	16	13	80	22	13	SLP10E2-13L	SLP10E2-13LS1		
	13	4.5	0.5	16	16		130	22	13	SLP10EE2-13L	SLP10EE2-13LS1		
1/2"	13	4.5	0.5	16	16	13	120	22	13	SLP10VE2-13L	SLP10VE2-13LS1		
	10.5	1.75	0	10	10	10	80	22	13	SLP15E2-10.5L	-	66×48×112	
	10.5	1.75	0	10	10	-	130	22	13	SLP15EE2-10.5L	-	66×48×112	
	10.5	1.75	0	10	10	10	120	22	13	SLP15VE2-10.5L	-	66×48×112	
	13	4.5	0.5	16	16	13	80	22	13	SLP15E2-13L	SLP15E2-13LS1	66×48×112	
3/4"	13	4.5	0.5	16	16		130	22	13	SLP15EE2-13L	SLP15EE2-13LS1	66×48×112	
	13	4.5	0.5	16	16	13	120	22	13	SLP15VE2-13L	SLP15VE2-13LS1	66×48×112	
	20	7.6	0.5	16	16	13	80	22	13	SLP-20E2	SLP-20E2S1	75×58×118	
1"	20	7.6	0.5	16	16		130	22	13	SLP-20EE2	SLP-20EE2S1	75×58×118	
	20	7.6	0.5	16	16	13	120	22	13	SLP-20VE2	SLP-20VE2S1	75×58×118	
1-1/4"	25	12	0.5	16	16	13	80	22	13	SLP-25E2	SLP-25E2S1	96×70×131	
	25	12	0.5	16	16		130	22	13	SLP-25EE2	SLP-25EE2S1	96×70×131	
1-1/2"	25	12	0.5	16	16	13	120	22	13	SLP-25VE2	SLP-25VE2S1	96×70×131	
	35	22	0.5	16	16	13	80	22	13	SLP-35E2	SLP-35E2S1	131×96×146	
2"	35	22	0.5	16	16		130	22	13	SLP-35EE2	SLP-35EE2S1	131×96×146	
	35	22	0.5	16	16	13	120	22	13	SLP-35VE2	SLP-35VE2S1	131×96×146	
2"	40	30	0.5	16	16	13	80	22	13	SLP-40E2	SLP-40E2S1	131×96×146	
	40	30	0.5	16	16		130	22	13	SLP-40EE2	SLP-40EE2S1	131×96×146	
2"	40	30	0.5	16	16	13	120	22	13	SLP-40VE2	SLP-40VE2S1	131×96×146	
	50	48	0.5	16	16	13	80	22	13	SLP-50E2	SLP-50E2	165×120×167	
2"	50	48	0.5	16	16		130	22	13	SLP-50EE2	SLP-50EE2	165×120×167	
	50	48	0.5	16	16	13	120	22	13	SLP-50VE2	SLP-50VE2	165×120×167	
Flange connection	25	12	0.5	16	16	13	80	80	13	-	SLPFE2-25LS1	134×110×160	
	25	12	0.5	16	16		130	130	13	-	SLPFEE2-25LS1	134×110×160	
Flange connection	25	12	0.5	16	16	13	120	120	13	-	SLPPFVE-25VLS1	134×110×160	
	35	22	0.5	16	16	13	80	22	13	-	SLPFE2-35LS1	160×135×175	
Flange connection	35	22	0.5	16	16		130	22	13	-	SLPFEE2-35LS1	160×135×175	
	35	22	0.5	16	16	13	120	22	13	-	SLPPFVE2-35VLS1	160×135×175	
Flange connection	40	30	0.5	16	16	13	80	22	13	-	SLPFE2-40LS1	160×145×180	
	40	30	0.5	16	16		130	22	13	-	SLPFEE2-40LS1	160×145×180	
Flange connection	40	30	0.5	16	16	13	120	22	13	-	SLPPFVE2-40VLS1	160×145×180	
	50	48	0.5	16	16	13	80	22	22	-	SLPFE2-50LS1	200×160×207	
Flange connection	50	48	0.5	16	16		130	22	22	-	SLPFEE2-50LS1	200×160×207	
	50	48	0.5	16	16	13	120	22	22	-	SLPPFVE2-50VLS1	200×160×207	

SLP Series 2/2 Solenoid Valve(Normal Open)



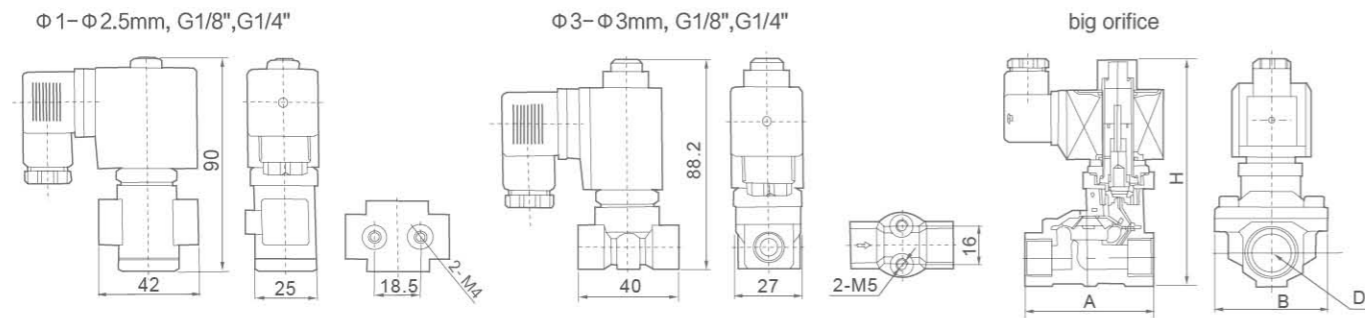
Graphic Symbol



Product Features

- Normal open, available body: brass, SS316
- Multiple seals are available for different medium
- Wide size range from 1/8" to 2", with both thread and flange connection
- Diaphragm pilot solenoid valve, with lower working pressure

Overall Dimensions



Specification

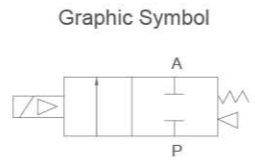
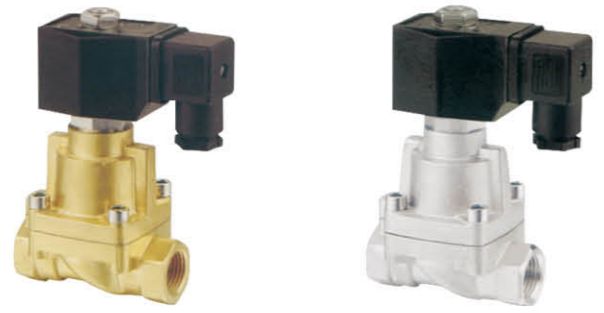
Port size (G)	Orifice (mm)	CV value	Pressure difference(Bar)				Max. temperature (°C)	Power		Model 220VAC 50/60Hz	
			Min. pressure	Max. working pressure				VA AC 220	W DC 24V	Brass	Stainless steel
				Air, Gas	Water, Hot water, Liquid	Light oil ≤20CST					
1/8"	1	0.04	0	30	30	25	80	22	13	SLP06E2-1LH	SLP06E2-1LS1H
	1	0.04	0	30	30	-	130	22	13	SLP06EE2-1LH	SLP06EE2-1LS1H
	1	0.04	0	30	30	25	120	22	13	SLP06VE2-1LH	SLP06VE2-1LS1H
	1.5	0.09	0	20	20	15	80	22	13	SLP06E2-1.5LH	SLP06E2-1.5LS1H
	1.5	0.09	0	20	20	-	130	22	13	SLP06EE2-1.5LH	SLP06EE2-1.5LS1H
	1.5	0.09	0	20	20	15	120	22	13	SLP06VE2-1.5LH	SLP06VE2-1.5LS1H
	2.5	0.2	0	15	15	12	80	22	13	SLP06E2-2.5LH	SLP06E2-2.5LS1H
	2.5	0.2	0	15	15	-	130	22	13	SLP06EE2-2.5LH	SLP06EE2-2.5LS1H
	2.5	0.2	0	15	15	12	120	22	13	SLP06VE2-2.5LH	SLP06VE2-2.5LS1H
	3	0.25	0	12	12	10	80	22	13	SLP06E2-3LH	SLP06E2-3LS1H
	3	0.25	0	12	12	-	130	22	13	SLP06EE2-3LH	SLP06EE2-3LS1H
	3	0.25	0	12	12	10	120	22	13	SLP06VE2-3LH	SLP06VE2-3LS1H

SLP Series 2/2 Solenoid Valve(Normal Open)

Specification

Port size (G)	Orifice (mm)	CV value	Pressure difference(Bar)				Max. temperature (°C)	Power		Model 220VAC 50/60Hz		Overall dimension Length x Width x Height A x B x H(mm)
			Min. pressure	Max. working pressure				VA AC 220	W DC 24V	Brass	Stainless steel	
				Air, Gas	Water, Hot water, Liquid	Light oil ≤20CST						
1/4"	1	0.04	0	30	30	25	80	22	13	SLP08E2-1LH	SLP08E2-1LS1H	
	1	0.04	0	30	30	-	130	22	13	SLP08EE2-1LH	SLP08EE2-1LS1H	
	1	0.04	0	30	30	25	120	22	13	SLP08VE2-1LH	SLP08VE2-1LS1H	
	1.5	0.09	0	20	20	15	80	22	13	SLP08E2-1.5LH	SLP08E2-1.5LS1H	
	1.5	0.09	0	20	20	-	130	22	13	SLP08EE2-1.5LH	SLP08EE2-1.5LS1H	
	1.5	0.09	0	20	20	15	120	22	13	SLP08VE2-1.5LH	SLP08VE2-1.5LS1H	
	2.5	0.2	0	15	15	12	80	22	13	SLP08E2-2.5LH	SLP08E2-2.5LS1H	
	2.5	0.2	0	15	15	-	130	22	13	SLP08EE2-2.5LH	SLP08EE2-2.5LS1H	
	2.5	0.2	0	15	15	12	120	22	13	SLP08VE2-2.5LH	SLP08VE2-2.5LS1H	
	3	0.25	0	12	12	10	80	22	13	SLP08E2-3LH	SLP08E2-3LS1H	
	3	0.25	0	12	12	-	130	22	13	SLP08EE2-3LH	SLP08EE2-3LS1H	
	3	0.25	0	12	12	10	120	22	13	SLP08VE2-3LH	SLP08VE2-3LS1H	
3/8"	13	4.5	0.5	8	8	7	80	33	32	SLP10E2-13LH	SLP10E2-13LS1H	66x48x124
	13	4.5	0.5	8	8		120	33	32	SLP10EE2-13LH	SLP10EE2-13LS1H	66x48x124
	13	4.5	0.5	8	8	7	120	33	32	SLP10VE2-13LH	SLP10VE2-13LS1H	66x48x124
1/2"	13	4.5	0.5	8	8	7	80	33	32	SLP15E2-13LH	SLP15E2-13LS1H	66x48x124
	13	4.5	0.5	8	8		120	33	32	SLP15EE2-13LH	SLP15EE2-13LS1H	66x48x124
	13	4.5	0.5	8	8	7	120	33	32	SLP15VE2-13LH	SLP15VE2-13LS1H	66x48x124
3/4"	20	7.6	0.5	8	8	7	80	33	32	SLP-20E2H	SLP-20E2S1H	75x58x130
	20	7.6	0.5	8	8		120	33	32	SLP-20EE2H	SLP-20EE2S1H	75x58x130
	20	7.6	0.5	8	8	7	120	33	32	SLP-20VE2H	SLP-20VE2S1H	75x58x130
1"	25	12	0.5	8	8	7	80	33	32	SLP-25E2H	SLP-25E2S1H	96x70x143
	25	12	0.5	8	8		120	33	32	SLP-25EE2H	SLP-25EE2S1H	96x70x143
	25	12	0.5	8	8	7	120	33	32	SLP-25VE2H	SLP-25VE2S1H	96x70x143
1-1/4"	35	22	0.5	8	8	7	80	33	32	SLP-35E2H	SLP-35E2S1H	131x96x158
	35	22	0.5	8	8		120	33	32	SLP-35EE2H	SLP-35EE2S1H	131x96x158
	35	22	0.5	8	8	7	120	33	32	SLP-35VE2H	SLP-35VE2S1H	131x96x158
1-1/2"	40	30	0.5	8	8	7	80	33	32	SLP-40E2H	SLP-40E2S1H	131x96x158
	40	30	0.5	8	8		120	33	32	SLP-40EE2H	SLP-40EE2S1H	131x96x158
	40	30	0.5	8	8	7	120	33	32	SLP-40VE2H	SLP-40VE2S1H	131x96x158
2"	50	48	0.5	8	8	7	80	33	32	SLP-50E2H	SLP-50E2S1H	165x120x179
	50	48	0.5	8	8		120	33	32	SLP-50EE2H	SLP-50EE2S1H	165x120x179
	50	48	0.5	8	8	7	120	33	32	SLP-50VE2H	SLP-50VE2S1H	165x120x179
Flange connection	25	12	0.5	8	8	7	80	33	32		SLPFEE2-25LS1H	134x110x172
	25	12	0.5	8	8		120	33	32		SLPFEE2-25LS1H	134x110x172
Flange connection	25	12	0.5	8	8	7	120	33	32		SLPFVE2-25LS1H	134x110x172
	35	22	0.5	8	8	7	80	33	32		SLPFEE2-35LS1H	160x135x187
	35	22	0.5	8	8		120	33	32		SLPFEE2-35LS1H	160x135x187
Flange connection	35	22	0.5	8	8	7	120	33	32		SLPFVE2-35LS1H	160x135x187
	40	30	0.5	8	8	7	80	33	32		SLPFEE2-40LS1H	160x145x192
	40	30	0.5	8	8		120	33	32		SLPFEE2-40LS1H	160x145x192
Flange connection	40	30	0.5	8	8	7	120	33	32		SLPFVE2-40LS1H	160x145x192
	50	48	0.5	8	8	7	80	33	32		SLPFEE2-50LS1H	200x160x219
	50	48	0.5	8	8		120	33	32		SLPFEE2-50LS1H	200x160x219
Flange connection	50	48	0.5	8	8	7	120	33	32		SLPFVE2-50LS1H	200x160x219

THP Series 2/2 Solenoid Valve(Normal Close)



Ordering Code

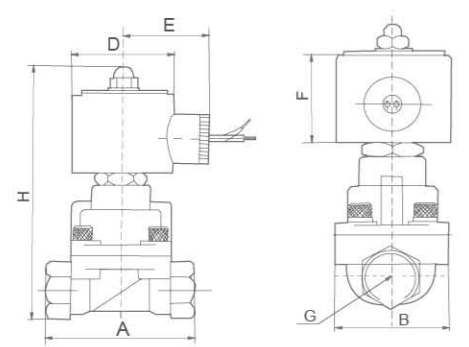
<b>THP</b>	<b>06</b>	<b>E2</b>		<b>2.5L</b>	<b>S2</b>		
<b>THP Series</b>	<b>Port Size</b> 06: G1/8" 08: G1/4" 10: G3/8" 15: G1/2" 20: G3/4" 25: G1" 35: G1-1/4" 40: G1-1/2" 50: G2" 25F: 1" Flange 35F: 1-1/4" Flange 40F: 1-1/2" Flange 50F: 2" Flange	<b>Voltage</b> E1: AC110V E2: AC220V E3: AC380V E4: DC24V E5: DC12V E6: AC36V E7: AC24V E8: DC110V E9: DC48V E10: DC36V	<b>Seal Material</b> T: Teflon V: VITON(N,V,E orificesΦ5.5mm optional)	<b>Orifice(mm)</b> 2.5L: 2.5 4.5L: 4.5 15L: 15.0 20L: 20.0 25L: 25.0 35L: 35.0 40L: 40.0 50L: 50.0 <i>Cancel if same with port size</i>	<b>Body material</b> Blank: Brass S1: SS316 S2: SS304	<b>Control style</b> Blank: Normal close H: Normal open	<b>Coil type</b> Blank: DIN connector F: Flying leads

- THP series, 2 port, 2 position, 1/8" port size, AC110V, NBR Seal, Orifice: 2.5mm, Brass valve body, normal close, DIN coil, model: THP06E1-2.5L
- THP series, 2 port, 2 position, 3/8" port size, AC220V, teflon Seal, Orifice: 15mm, SS304 valve body, normal open, flying leads coil, model: THP10TE2-15LS2HF

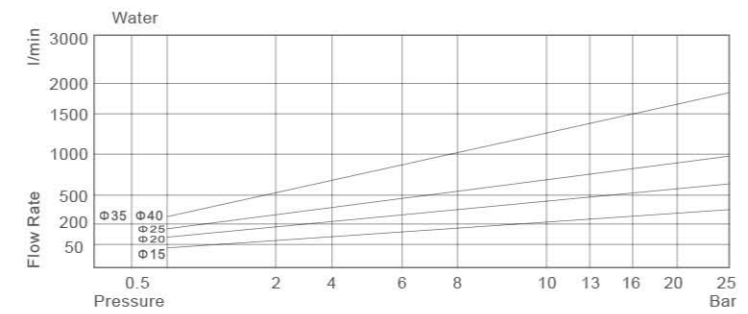
Product Features

- Normal Close, available body: brass, SS304, SS316
- Multiple seals are available for different medium
- Wide size range from 1/8" to 2"
- DIN style / flying leads coil, thread / flange connection
- Piston pilot solenoid valve with high working pressure and temperature

Overall Dimensions



Flow Chart

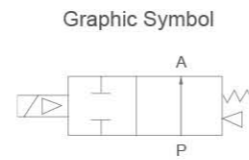


THP Series 2/2 Solenoid Valve(Normal Close)

Specification

Port size (G)	Orifice (mm)	CV value	Min. pressure	Pressure difference (Bar)							Max. temperature (°C)	Power		Model		Overall dimension Length x Width x Height A x B x H (mm)	
				Air		Gas		Water, Hot water, Liquid		Light oil ≤20CST		AC 220	DC 24V	220VAC	50/60Hz		
				AC	DC	AC	DC	AC	DC	AC							DC
G1/8"	2.5	0.23	0	8	8	8	8	6	6	10	180	22	13	THP06T-2.5L	-	48x25x85.5	
	2.5	0.23	0	13	13	13	13	7	7	10	110	22	13	THP06V-2.5L	-	48x25x85.5	
	4.5	0.6	0	7	4	7	4	4	4	7	165	22	13	THP06T-4.5L	-	58x25x85.5	
	4.5	0.6	0	7	4	7	4	4	4	7	110	22	13	THP06V-4.5L	-	58x25x85.5	
G1/4"	2.5	0.23	0	7	4	7	4	4	4	10	180	22	13	THP08T2-2.5L	-	48x25x85.5	
	2.5	0.23	0	13	13	13	4	7	7	10	110	22	13	THP08V-2.5L	-	48x25x85.5	
	4.5	0.6	0	7	4	7	4	4	4	7	165	22	13	THP08T-4.5L	-	58x25x85.5	
	4.5	0.6	0	7	4	7	4	4	4	7	110	22	13	THP08V-4.5L	-	58x25x85.5	
G3/8"	15	4.5	0.5	25	20	25	20	20	20		110	33	32	THP10T-15L	THP10T-15LS2	75x52x129	
	15	4.5	0.5	25	20	25	20	20	20	10	185	30	25	THP10T-15LF	THP10T-15LS2F	75x52x129	
G1/2"	15	4.5	0.5	25	20	25	20	20	20		110	33	32	THP-15T	THP-15TS2	75x52x129	
	15	4.5	0.5	25	20	25	20	20	20	10	185	30	25	THP-15TF	THP-15TS2F	75x52x129	
G3/4"	20	9.0	0.5	25	20	25	20	20	20		110	33	32	THP-20T	THP-20TS2	85x60x141	
	20	9.0	0.5	25	20	25	20	20	20	10	185	30	25	THP-20TF	THP-20TS2F	85x60x141	
G1"	25	13	0.5	25	20	25	20	20	20		110	33	32	THP-25T	THP-25TS2	100x70x148	
	25	13	0.5	25	20	25	20	20	20	10	185	30	25	THP-25TF	THP-25TS2F	100x70x148	
G1-1/4"	35	26	0.5	25	20	25	20	20	20	10	110	33	32	THP-35T	THP-35TS2	120x90x168	
	35	26	0.5	25	20	25	20	20	20		185	30	25	THP-35TF	THP-35TS2F	120x90x168	
G1-1/2"	35	26	0.5	25	20	25	20	20	20	10	110	33	32	THP40T-35L	THP40T-35LS2	120x90x168	
	35	26	0.5	25	20	25	20	20	20		185	30	25	THP40T-35LF	THP40T-35LS2F	120x90x168	
G2"	50	48	0.5	25	20	25	20	20	20		110	33	32	-	THP-50TS2	150x110x190	
	50	48	0.5	25	20	25	20	20	20	10	185	30	25	-	THP-50TS2F	150x110x190	
G1" Flange	25	13	0.5	25	20	25	20	20	20		110	33	32	-	THPPFT-25LS2	134x110x185	
	25	13	0.5	25	20	25	20	20	20	10	185	30	25	-	THPPFT-25LS2F	134x110x185	
G1-1/4" Flange	35	26	0.5	25	20	25	20	20	20		110	33	32	-	THPPFT-35LS2	160x135x200	
	35	26	0.5	25	20	25	20	20	20	10	185	30	25	-	THPPFT-35LS2F	160x135x200	
G1-1/2" Flange	35	26	0.5	25	20	25	20	20	20		110	33	32	-	THPPFT-40LS2	160x145x205	
	35	26	0.5	25	20	25	20	20	20	10	185	30	25	-	THPPFT-40LS2F	160x145x205	
G2" Flange	50	45	0.5	25	20	25	20	20	20	10	110	33	32	-	THPPFT-50LS2	200x155x250	
	50	45	0.5	25	20	25	20	20	20		185	30	25	-	THPPFT-50LS2F	200x155x250	

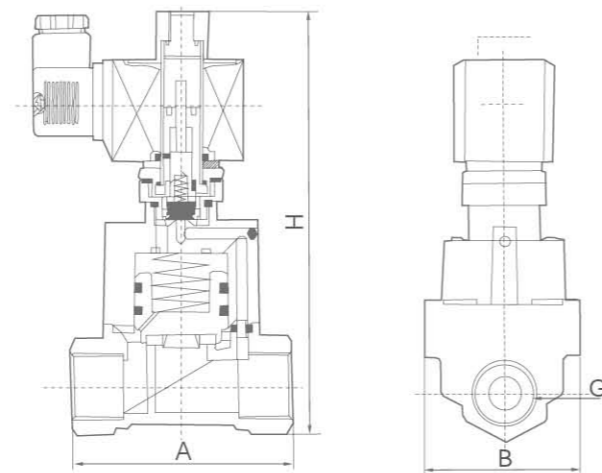
THP Series 2/2 Solenoid Valve(Normal Open)



Product Features

- Normal open, available body: brass, SS304, SS316
- Multiple seals are available for different medium
- Wide size range from 1/8" to 2"
- DIN style / flying leads coil, thread / flange connection
- Piston pilot solenoid valve with high working pressure and temperature

Overall Dimensions



Specification

Port size (G)	Orifice (mm)	CV value	Pressure difference(Bar)						Max. temperature (°C)	Power		Model		Overall dimension Length × Width × Height A × B × H(mm)
			Min. pressure	Max. working pressure				AC 220		DC 24V	Brass	Stainless steel		
				Air	Gas	Water, Hot water, Liquid	Light oil ≤20CST						Steam	
3/8"	15	4.5	0.5	8	8	8	8	130	33	32	THP10T-15LH	THP10T-15LS2H	75×52×147	
	15	4.5	0.5	8	8	8	8	130	33	32	THP10T-15LHF	THP10T-15LS2HF	75×52×147	
1/2"	15	4.5	0.5	8	8	8	8	130	33	32	THP-15TH	THP-15TS2H	75×52×147	
	15	4.5	0.5	8	8	8	8	130	33	32	THP-15THF	THP-15TS2HF	75×52×147	
3/4"	20	9	0.5	8	8	8	8	130	33	32	THP-20TH	THP-20TS2H	85×60×159	
	20	9	0.5	8	8	8	8	130	33	32	THP-20T2HF	THP-20TS2HF	85×60×159	
1"	25	13	0.5	8	8	8	8	130	33	32	THP-25TH	THP-25TS2H	100×70×166	
	25	13	0.5	8	8	8	8	130	33	32	THP-25THF	THP-25TS2HF	100×70×166	
1-1/4"	35	26	0.5	6	6	6	6	130	33	32	THP-35TH	THP-35TS2H	120×90×186	
	35	26	0.5	6	6	6	6	130	33	32	THP-35THF	THP-35TS2HF	120×90×186	
1-1/2"	35	26	0.5	6	6	6	6	130	33	32	THP40T-35LH	THP40T-35LS2H	120×90×186	
	35	26	0.5	6	6	6	6	130	33	32	THP40T-35LHF	THP40T-35LS2HF	120×90×186	
1"	25	25	0.5	8	8	8	8	130	33	32	-	THP-25FE2TS2H	134×110×200	
Flange	25	13	0.5	8	8	8	8	130	33	32	-	THP-25FE2TS2HF	134×110×200	
1-1/4"	35	26	0.5	6	6	6	6	130	33	32	-	THP-35FE2TS2H	160×134×215	
Flange	35	26	0.5	6	6	6	6	130	33	32	-	THP-35FE2TS2HF	160×134×215	
1-1/2"	40	26	0.5	6	6	6	6	130	33	32	-	THP-40FE2TS2H	160×145×200	
Flange	40	26	0.6	6	6	6	6	130	33	32	-	THP-40FE2TS2HF	160×145×200	

XPT Series Electronic-drain Valve



Product Features

The electronic-drain valve is made of solid state electronic time-setting and solenoid valve, which can make the compress condensates water drain automatically. It is widely used in filter drier, oil/water separator, refrigerant compressed air drying machine, drying machine, air compressor drip-feet, and so on. The time of drain and interval can be adjustable according to different needs.

Specification

Model	XPT, XPT-A, XPT-B
Various pressure can be provided	1.6MPa, 4.0MPa, 8.0MPa
Various electric voltages can be provided	AC220V, AC110V, DC24V
Variety connects can be provided	G1/2" female thread
Interval	(OFF) 0.5~45 Minutes
Drain time	(ON) 0.5~10 Second
Manual test button	TEST
Protection grade	IP65
Insulate grade	H class(Max/temp:180°C)

- It can substitute for the expensive process valve;
- Only one type applies all applications;
- It can be installed simply, full-automatically, without maintenance;
- Sieve of ball valve can be machined

### XMfZ Series Right Angle Pulse Valve



Ordering Code

**X** XCPC Product  
**MF** Pulse Valve  
**Z** Type Code  
**25** Orifice Size  
**P** Thead Type  
**EX** Wiring Form

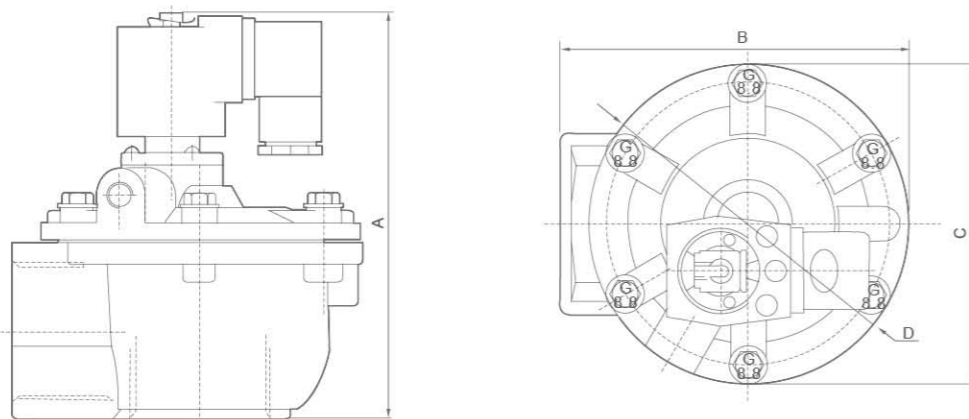
**Speciality**

Adopt international advanced technology.  
 Used for dust remover.  
 Key parts all made of imported materials.  
 Pneumatic control type,solenoid control type,ex-proof solenoid control type for choose.  
 Female thread connection port,easy to be mounted.

Specification

Model	XMfZ-20A	XMfZ-20P	XMfZ-20	XMfZ-25	XMfZ-25P	XMfZ-35P	XMfZ-40S	XMfZ-50S	XMfZ-62S	XMfZ-76S	XMfZ-100S
Working Pressure	0.3~0.8MPa										
Ambient Temperature	-5~55℃										
Relatively Humidity	< 85%										
Working Medium	Clean Air										
Voltage	AC110V/AC220V/DC24V										
Diaphragm Life Cycles	Over 1000k Cycles										
Orifice(mm)	Φ20	Φ20	Φ20	Φ25	Φ25	Φ35	Φ40	Φ50	Φ62	Φ76	Φ100
Connection Port	G3/4"	G3/4"	G3/4"	G1"	G1"	G1 1/2"	G1 1/2"	G2"	G2 1/2"	G3"	Φ100

Overall Dimensions



Dimension Sheet

Model	XMfZ-20A	XMfZ-20P	XMfZ-20	XMfZ-25	XMfZ-25P	XMfZ-35P	XMfZ-40S	XMfZ-50S	XMfZ-62S	XMfZ-76S	XMfZ-100S
A	173	124	110	110	124	142	166	202	222	245	356.5
B	145	105	90.5	90.5	105	121	132	210	210	230.5	286.5
C	-	82.5	75	75	82.5	-	-	-	-	-	-
D	Φ90	-	-	-	-	Φ112	Φ137	Φ185	Φ185	Φ200	Φ221

### XMfY Series In Line Pulse Valve



Ordering Code

**X** XCPC Product  
**MF** Pulse Jet Valve  
**Y** Type Code  
**50** Orifice  
**S** Double Diaphragms  
**EX** Wiring Form

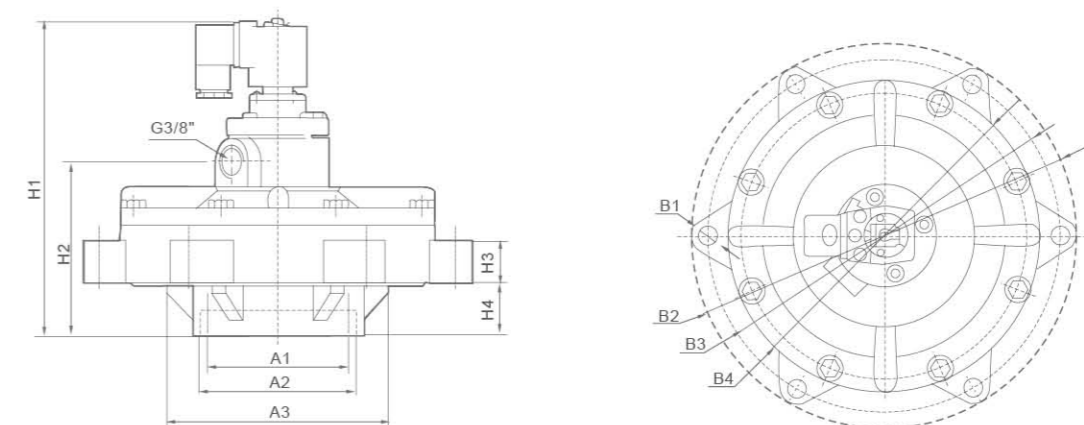
**Speciality**

Adopt international advanced technology  
 Used for dust remover  
 Key parts all made of imported materials  
 Pneumatic control type,solenoid control type,ex-proof solenoid control type for choose  
 Directing mounted to gas bag better blowing effect and small loss of air source.

Specification

Model	XMfY-50S	XMfY-62S	XMfY-76S
Working Pressure	0.3~0.8MPa		
Ambient Temperature	-5~55℃		
Relatively Humidity	< 85%		
Working Medium	Clean Air		
Voltage	AC110V/AC220V/DC24V		
Diaphragm Life Cycles	Over One Million Cycles		
Orifice(mm)	Φ50	Φ62	Φ76
Connection Port	G2"	G2-1/2"	G3"

Overall Dimensions



Dimension Sheet

Model	A1	A2	A3	B1	B2	B3	B4	H1	H2	H3	H4
XMfY-50S	Φ64.5	Φ78.5	Φ118	6-Φ11.5	Φ200	Φ180	Φ159	187	100	25	31
XMfY-62S	Φ80	Φ93.5	Φ145	6-Φ11	Φ226	Φ204	Φ185	197	107	34.5	35
XMfY-76S	Φ90	Φ99	Φ141	6-Φ11	Φ248	Φ227	Φ200	205	113	27	34

### XMF Series Insert Pipe Type Pulse Valve



Ordering Code

<b>X</b>	<b>MF</b>	<b>□</b>	<b>25</b>	<b>DD</b>	<b>EX</b>
XPCPC Product	Pulse Jet Valve	Type Code Blank: Solenoid control Q: Pneumatic control	Orifice Solenoid	Insert Pipe Type	Wiring Form Blank: Normal Type EX: Ex-proof Type

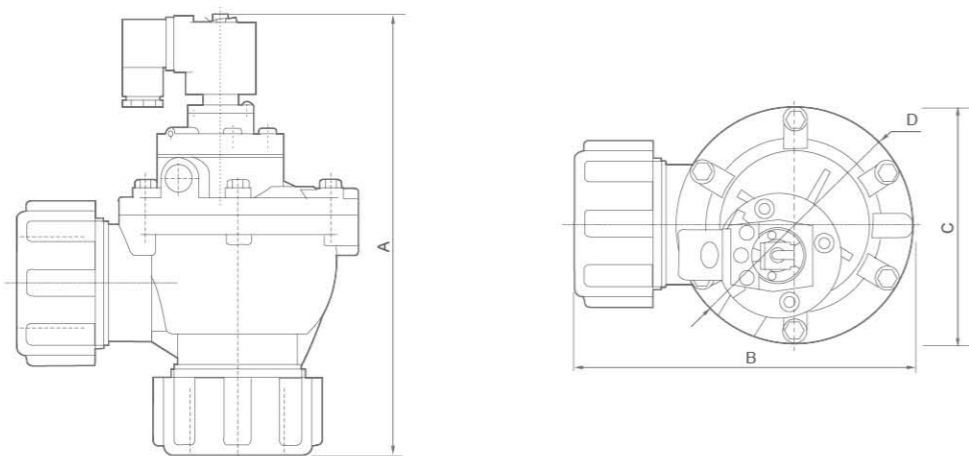
#### Speciality

- Adopt international advanced technology
- Used for dust remover
- Key parts all made of imported materials
- Pneumatic control type, solenoid control type, ex-proof solenoid control type for choose.
- Insert pipe style, much easier to be mounted.

#### Specification

Model	XMF-25DD	XMF-45DD
Working Pressure	0.3~0.8MPa	
Ambient Temperature	-5~55℃	
Relatively Humidity	< 85%	
Working Medium	Clean Air	
Voltage	AC110V/AC220V/DC24V	
Diaphragm Life Cycles	Over One Million Cycles	
Orifice(mm)	Φ25	Φ45
Connection Port	G1"	G1-1/2"

#### Overall Dimensions



#### Dimension Sheet

Model	A	B	C	D
XMF-25DD	189	131	82.5	-
XMF-45DD	237	179.5	-	Φ126

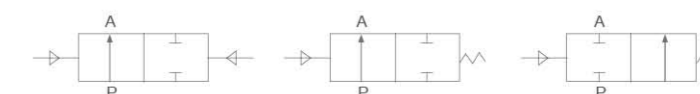
### XCP Series Plastic Actuator Bevel Valve



Ordering Code

<b>XCP</b>	<b>15</b>	<b>50</b>	<b>S</b>	<b>C</b>	<b>□</b>
Series Code XCP Series Plastic Bevel Valve	Port Size 10: G3/8" 15: G1/2" 20: G3/4" 25: G1" 32: G1-1/4" 40: G1-1/2" 50: G2" 65: G2-1/2" 80: G3"	Actuator Size 40: 40mm 50: 50mm 63: 63mm 80: 80mm 100: 100mm	Action Type S: Single Action D: Double Action	Control Function C: Normal Close (Standard) O: Normal Open	Body Material Blank: S.S 304 (Standard) 316: S.S 316 316L: S.S 316L

Graphic Symbol



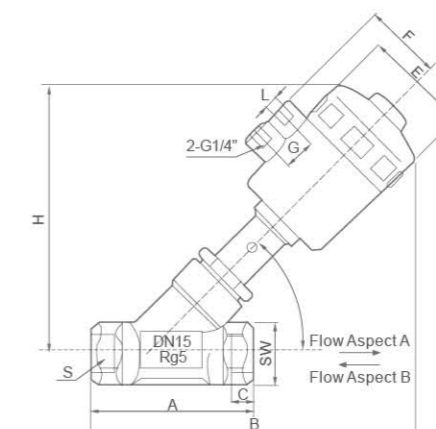
Double-Acting      Normally Closed      Normally Open

#### Specification

Model	10	15	20	25	32	40	50	65	80
Port size	G3/8"	G1/2"	G3/4"	G1"	G1-1/4"	G1-1/2"	G2"	G2-1/2"	G3"
KV Value(m³/h)	3.7	4.2	9	19	33	42	59	90	135
Max. Working Pressure(Mpa)	0~1.6	0~1.6	0~1.1	0~1.1	0~1.5	0~1.25	0~1.0	0~1.6	0~1.6
Min. Pilot Pressure(Mpa)	0.39	0.39	0.39	0.42	0.5	0.44	0.4	0.4	0.4
Actuator	40	50	50	50/63	63	63	63/80	80	100
Medium Temperature	-10~+180℃								

Flow Direction      A(Flow Direction Below The Seat) or B(Flow Direction above The Seat)

#### Overall Dimensions



#### Dimension Sheet

Orifice Size(mm)	Port size	Actuator Size(Φmm)	A	B	C	ΦE	F	H	S	SW	G	L
10	G3/8"	40	65	142	12	53	30	85	G3/8"	25	20	G1/8"
15	G1/2"	50	76	168	14	64	44	115	G1/2"	28	24	G1/4"
20	G3/4"	50	92	175	16	64	44	131	G3/4"	32	24	G1/4"
25	G1"	63	103	218	21	80	54	166	G1"	39	24	G1/4"
32	G1-1/4"	63	112	228	19	80	54	172	G1-1/4"	49	24	G1/4"
40	G1-1/2"	63	129	232	21	80	54	174	G1-1/2"	56	24	G1/4"
50	G2"	80	143	263	27	100	62	202	G2"	68	24	G1/4"
65	G2-1/2"	80	186	280	28	100	62	209	G2-1/2"	84	24	G1/4"
80	G3"	100	218	355	34	125	71	268	G3"	101	30	G1/4"

### XC Series Stainless Steel Bevel Valve



Ordering Code

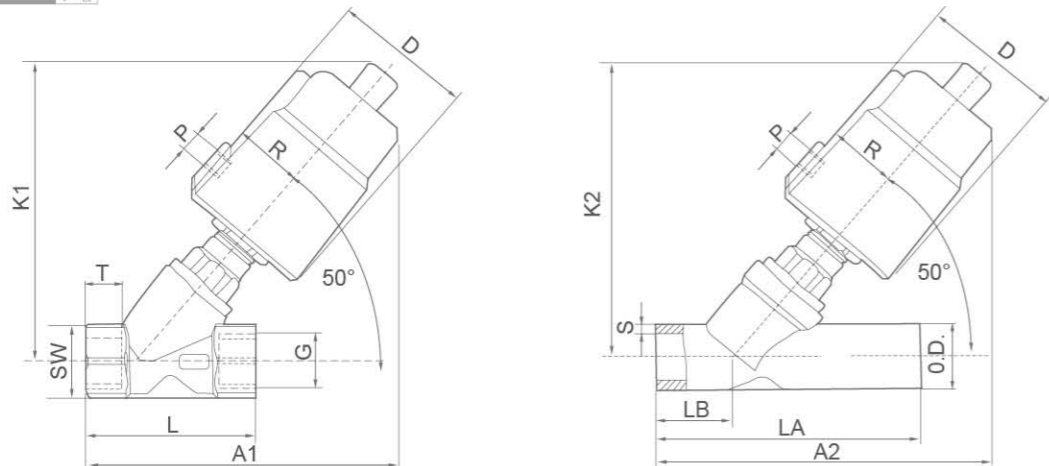
<b>XC</b>	<b>10</b>	<b>40</b>	<b>□</b>	<b>□</b>
<b>Series Code</b>	<b>Port Size</b>	<b>Actuator Size</b>	<b>Type</b>	<b>Body Material</b>
XC Series	10:G3/8"	40:40mm	SC:Single Action	Blank:S.S 304
Stainless Steel	15:G1/2"	50:50mm	Normal Close	(Standard)
Bevel Valve	20:G3/4"	63:63mm	SO:Single Action	316:S.S 316
	25:G1"	90:90mm	Normal Open	316L:S.S 316L
	32:G1-1/4"	100:100mm	DC:Double Action	
	40:G1-1/2"		Normal Close	
	50:G2"		DF:Double Action	
	65:G2-1/2"		Free Installation	
	80:G3"			

Specification

Model	XC10-80SC/SO/DC/DF		
Port size	DN10-DN50		
Thread	G3/8"-G3"		
Welded	DIN11850	2 DIN11850	3 ISO2037
Valve Body	CF8M		
Actuator	CF8		
Seat seals	PTFE		
Stem seals	PTFE/FKM		
Piston seals	FKM/NBR		

Model	XC10-80SC/SO/DC/DF	
Applicable medium	Water,liquid,neutral gas,water steam slight corrosive gas and liquid	
Temperature range	PTFE:-10°C to +180°C	
Ambient temperature	-10°C to +60°C	
Viscosity	max. 600mm <sup>2</sup> /s	
Installation	Any position	
Controlling medium	Air or neutral gas	
Controlling pressure range	0.3~1Mpa	

Overall Dimensions



Dimension Sheet

Specification	Actuator (mm)	D	R	P	Thread						Welded					
					G	K1	A1	L	T	SW	O.D.	K2	A2	LA	LB	S
DN10	40	53	28	G1/8"	G3/8"	105	144	65	12	25	/	/	/	/	/	/
DN15	50	56	35	G1/8"	G1/2"	142	182	76	14	28	21	115	142	100	18	3
DN20	50	56	35	G1/8"	G3/4"	152	189	92	16	32	27	131	170	117	30	3
DN25	50	56	35	G1/8"	G1"	155	207	103	21	39	34	138	175	130	30	3
DN25	63	70	43	G1/8"	G1"	176	217	103	21	39	34	166	200	130	30	3
DN32	63	70	43	G1/8"	G1-1/4"	177	222	112	19	49	42	172	207	145	30	3
DN40	63	70	43	G1/8"	G1-1/2"	182	225	129	21	56	48	174	207	160	30	4
DN50	63	70	43	G1/8"	G2"	196	249	143	27	68	60	193	227	190	30	4
DN50	90	94	56	G1/4"	G2"	206	268	143	27	68	60	202	235	190	30	4
DN65	90	94	56	G1/4"	G2-1/2"	215	290	186	28	84	76	209	255	230	40	5
DN80	125	135	73	G1/4"	G3"	295	335	218	34	101	/	/	/	/	/	/

### XQ22HD Series Right Angle Valve



Ordering Code

<b>X</b>	<b>Q</b>	<b>22</b>	<b>HD</b>	<b>□</b>	<b>□</b>	<b>□</b>
<b>XCPC Product</b>	<b>Right angle valve code</b>	<b>Two-position Two-way</b>	<b>Air control liquid valve</b>	<b>Connection Size</b>	<b>Type</b>	<b>Material</b>
				15:G1/2" 20:G3/4" 25:G1" 32:G1 1/4" 40:G1 1/2" 50:G2"	S:Single acting type D:Double acting type K:Normally open	Blank: Normal type H: High temperature type

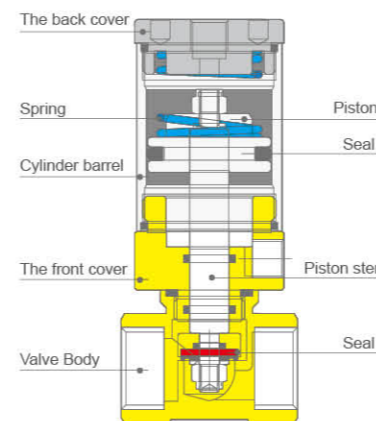
Product Features

Classical design, durable Air control design, energy saving and environmental protection Big flow rate, safety and Precision Can work at low pressure, smartness for on and off, good seal performance. There are two kinds of structure single acting type and double acting type.

Application: food, medicine, industry, abstersion, landification, printing, etc.

Remark: Normally open: Flow comes under the piston seal, against arrow on body.

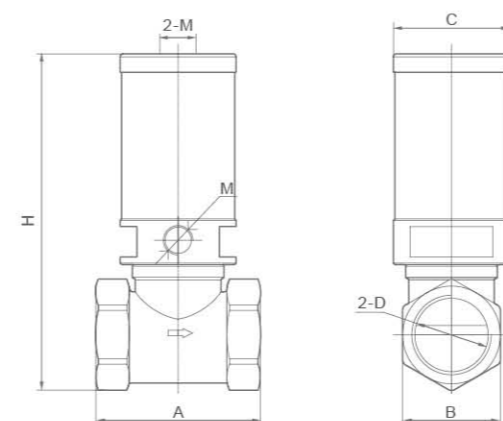
Internal structure



Specification

Model	Orifice	Medium	Working pressure	Temp range	Kv value(m3/k)
XQ22HD-15	15mm	Compress Air Water Oil	0.2~0.6MPa	-5-60°C (High temperature) -5-150°C	4
XQ22HD-20	20mm				5
XQ22HD-25	25mm				10
XQ22HD-32	32mm				25
XQ22HD-40	40mm				25
XQ22HD-50	50mm				40

Overall Dimensions



Dimension Sheet

Model	A	B	C	D	H	M
XQ22HD-15	47	26	31	G1/2"	96	G1/8"
XQ22HD-20	54	33	31	G3/4"	102	G1/8"
XQ22HD-25	66	34	38	G1"	115	G1/8"
XQ22HD-32	77	48	46	G1-1/4"	143	G1/8"
XQ22HD-40	86	54	56	G1-1/2"	160	G1/8"
XQ22HD-50	116	67	69	G2"	182	G1/8"

XGV 200 Series Process Valve

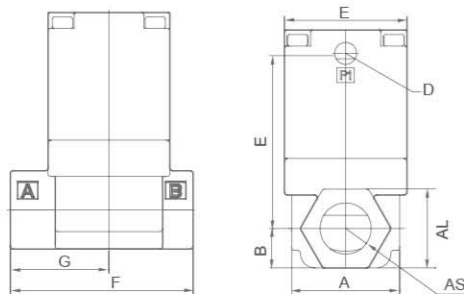


Ordering Code	XGV2	0	1	15	NC	M
<b>XGV Series</b>	XGV2 Series Process Valve	0:Air Operated 1:External Pilot Solenoid	1:For Compressed Air and air-hydro Circuit Control 2:For Flow Control 3:Coolant Valve 4:Steam Valve	06:G1/8" 08:G1/4" 10:G3/8" 15:G1/2" 20:G3/4" 25:G1" 32:G1-1/4" 40:G1-1/2" 50:G2"	NO:Normal Open NC:Normal Closed CO:Liberty(double acting)	B:NBR F:FKM P:PTFE M:METAL

Specification

Model	GV2*1---BFC seal material:NBR/FKM/EPR			GV2*2---BFC seal material:NBR/FKM/EPR			GV2*3---M seal material:Metal		GV2*4---P seal material:PTFE	
	NBR	FKM	EPR	NBR	FKM	EPR	NBR	FKM		
Fluid	Air(standard dry); CO <sub>2</sub> (less than 0.7Mpa); N <sub>2</sub> ;Turbine oil Hydraulic fluid(40~100mm <sup>2</sup> /s)	Argon Helium Turbine oil, Hydraulic fluid (40~100mm <sup>2</sup> /s)	CO <sub>2</sub> (0.7MPa or more)	Water,oil,Air, Vacuum etc. (-5-60°C)	Water,oil,etc. Air Operated Only (-5-99°C)		Coolant (-5~60°C) (-5~99°C for air operated)		Steam (-5~180°C)	
Body /Actuator Material	S.S304/Aluminum alloy									
Seal Material	NBR	FKM	EPR	NBR	FKM	EPR	NBR	FKM		
Temperature of Medium	-5~60°C	-5~99°C		-5~60°C	-5~99°C		-5~60°C	-5~99°C	-5~180°C	
Ambient Temperature	-5~50°C(Air operated type 60°C)								-5~60°C	
Proof Pressure	1.5MPa									
Operating Pressure	0~1.0MPa			NO. CO and NC standard orifice dia. low vacuum to 0.5Mpa NC. samler orifice dia. low vacuum to 1.0Mpa				0~1.0MPa		0~0.9MPa
External pilot air	Pressure range	0.2~0.7MPa			NC.:0.25~0.7MPa NO./CO.:0.1+0.25 x Use Pressure~0.25+0.25 x Use Pressure Mpa			NC.:0.25~0.7MPa NO.:0.1+0.25 x Use Pressure~0.7Mpa		NC.:0.3~0.7MPa NO.:0.1+0.25x Use Pressure ~0.25+0.25xUse Pressure Mpa
	Lubrication temperature	Not required(use turbine oil Class 1 ISO VG32,f lubricated.)								-5 to 60°C

Overall Dimensions



Dimension Sheet

Model	Port Size	A	B	C	D	E	F	G	AS	AL
DN 6	G1/8"	28	12.5	39.5	1/8	27	45	24	1/8	23
DN 8	G1/4"	28	12.5	39.5	1/8	27	45	24	1/4	23
DN 10	G3/8"	28	12.5	39.5	1/8	27	45	24	1/4	23
DN 10	G3/8"	37	14	55	1/8	42	63	34	3/8	27
DN 15	G1/2"	37	14	55	1/8	42	63	34	1/2	27
DN 20	G3/4"	46	17.5	60.5	1/8	50	80	43	3/4	33
DN 25	G1"	58	20	73	1/8	60	90	49	1	43
DN 32	G1-1/4"	68	26.5	94	1/8	77	105	52.5	1-1/4	48
DN 40	G1-1/2"	85	30	107	1/4	96	120	60	1-1/2	55
DN 50	G2"	100	37	123	1/4	113	140	70	2	66

PAV100 Series Pneumatic Axial Valve

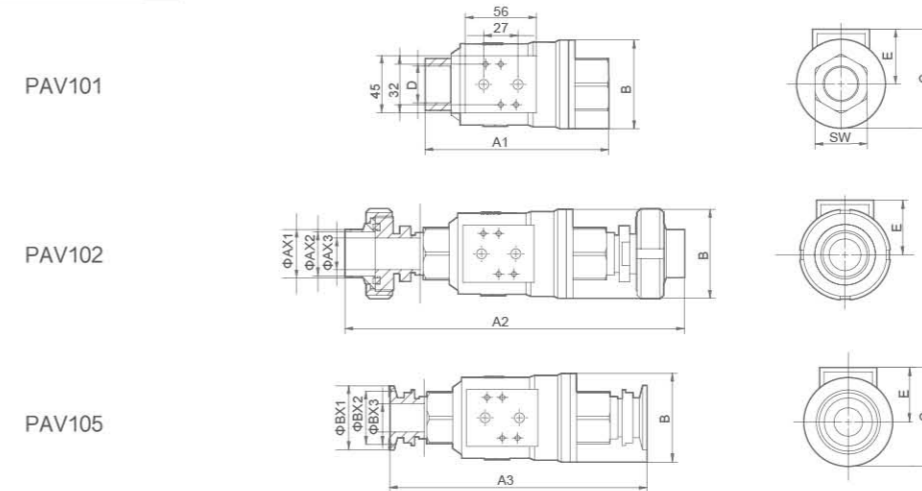


Ordering Code	PAV	101	15	NC	E
<b>Series Code</b>	PAV Series	101:101 Female Threaded(Standard) 102:102 Flare Connection 105:105 Tri-Clamp Ends	10:G3/8" 15:G1/2" 20:G3/4" 25:G1" 32:G1-1/4" 40:G1-1/2" 50:G2"	NO:Normally Open NC1:Normally closed (single acting) NC2:Normally closed (Double acting) NA:Liberty	E:EPDM(standard) F:FKM

Specification

Model	PAV101~105:DN10~50
Temperature of Medium	NBR: -10~ 70°C FKM: -10~ 150°C EPDM: -10~130°C
Temperature of Pilot Valve	-10~60°C
Working pressure	0~1.6 MPa
Max.Control Pressure of pilot valve	1 MPa
Control Pressure Rang(double acting)	0.35~0.8 MPa
Control Pressure Rang(single acting)	0.45~0.8MPa
Ambient and fluid of Pilot valve	Filtered Air or gas
Material Od Bpdy	S.S.304/316
Seals of Proof of duty	FPM
Piston Seals	FKM/NBR

Overall Dimensions



Dimension Sheet

DN	Port Size	A1	A2	A3	B	C	D	E	SW	AX1	AX2	AX3	BX1	BX2	BX3
DN 10	G3/8"	98	192	158	46	46	3/8	33	22	19	15.5	14	50.5	43.5	10
DN 15	G1/2"	112	206	172	52	52	1/2	35	27	25.5	22	14	50.5	43.5	13
DN 20	G3/4"	135	233	195	64	64	3/4	40	32	32	29	18	50.5	43.5	19
DN 25	G1"	143	245	203	69	69	1	43	41	38	35	22	50.5	43.5	25
DN 32	G1-1/4"	165	284	235	86	86	1-1/4	51	50	45	40	27	50.5	43.5	32
DN 40	G1-1/2"	180	300	250	96	96	1-1/2	58	56	51	47.5	33	64	56.5	38
DN 50	G2"	207	332	287	108	108	2	62	70	57	53	43	64	56.5	50

### PAV200 Series Pneumatic Axial Valve



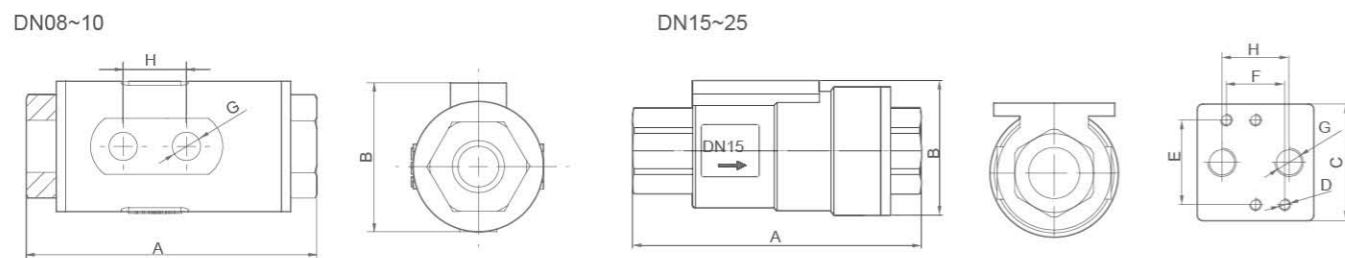
Ordering Code

<b>PAV</b>	<b>201</b>	<b>15</b>	<b>NC</b>	<b>B</b>	<b>□</b>
<b>Series Code</b> PAV Series	<b>Model</b> 201:201 Female Threaded(Standard) 202:202 Flare Connection 205:205 Tri-Clamp Ends	<b>Nominal Diameter</b> 08:G1/4" 10:G3/8" 15:G1/2" 20:G3/4" 25:G1" 32:G1-1/4" 40:G1-1/2" 50:G2"	<b>Control Function</b> NO:Normally Open NC1:Normally closed (single acting) NC2:Normally closed (Double acting) NA:Liberty	<b>Seat Seals</b> Blank:PU(standard) F:FKM B:NBR	<b>Style</b> Blank:common style H:High Pressure Style

Specification

Model	PAV201~205:DN08~50	
Temperature of Pilot Valve	-10~60°C	
Max.Control Pressure of pilot Valve	1.0 MPa	
Ambient and fluid of Pilot valve	Filtered Air or gas	
Control Pressure Rang(double acting)	0.45~0.8MPa	
Control Pressure Rang(single acting)	0.5~0.8MPa	
Temperature of Medium	-20~80°C	
Filtering accuracy of media	200mesh(0.074mm)	
Material of Body	S.S.304/316	
Common style working pressure	1.6MPa	
High pressure styleMax. Working pressure	Liquid	12MPa
	Gas	8MPa
Applicable medium	Water, air oil and other non-corrosive liquids or gases	

Overall Dimensions



Dimension Sheet

DN	Port Size	Kv m³/h	A	B	C	D	E	F	G	H
DN 8	G1/4"	1.9	78	38	/	/	/	/	G1/8	17
DN 10	G3/8"	2.5	77	40	/	/	/	/	G1/8	17
DN 15	G1/2"	5.7	99	45	40	M4	29	20	G1/8	20
DN 20	G3/4"	8.8	110	57	49	M5	32	24	G1/8	24
DN 25	G1"	13.3	123	67	64	M5	32	24	G1/8	24

### HLP Series Pressure Controller



Descriptions

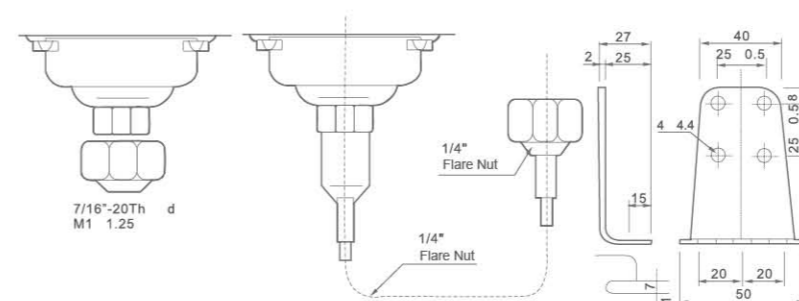
For use with fluorinated refrigerants as well as with a air and water. (Allowable Fluid Temp.: -10°C ~+110°C )  
 Various contact functions available,  
 With SPDT contact mechanism,  
 Renovated micro-switch stucture ensures the reliable switch function,  
 Manual-controlled and no use of other instruments to have a function test,  
 Flexible mounting plate suits various kinds of application.  
 Our products can substitute for congeneric import products, such as JOHNSON、DANFOSS、SAGINOMIYA、3S、RANCO and so on

Specification

Model	Range(bar)		Differential(bar)		Factory Setting(bar)		Max. Bellows Press(bar)
	Min.	Max.	Min.	Max.	OFF	ON	
HLP503	-0.7	3	0.2	1.5	2	1	16.5
HLP506	-0.7	6	0.6	4	3	2	16.5
HLP506M	-0.7	6	Duplicate voltage disparity≤1		3	Manual Reset	16.5
HLP110	1	10	1	3	6	5	16.5
HLP516	5	16	1	4	10	8	35
HLP520	5	24	2	5	16	13	35
HLP530D	5	30	5	10	20	15	35
HLP530	8	30	Fixed3-5		20	15-17	35
HLP530M	8	30	Duplicate voltage disparity≤4		20	Manual Reset	35

Model	Press Side	Range(bar)		Differential(bar)		Factory Setting(bar)		Max. Bellows Press(bar)
		Min.	Max.	Min.	Max.	OFF	ON	
HLP830	Low Side	-0.7	6	0.6	4	3	2	16.5
	High Side	8	30	Fixed 3~5		2	15	35
HLP830HM	Low Side	-0.7	6	0.6	4	3	2	16.5
	High Side	8	30	Duplicate voltage disparity≤4		20	Manual Reset	35
HLP830HLM	Low Side	-0.7	6	Duplicate voltage disparity≤4		3	Manual Reset	16.5
	High Side	8	30	Duplicate voltage disparity≤4		20	Manual Reset	35

Way of Connection



Slight Moring Swith's Date

Specified Voltage(V)	Specified Electric Current(A)	
	A.C. 125	A.C. 125
Non-Inductive Current	48	12
Maximum Load	48	12
Twinking Electric Current	228	72

## XGT Series Pneumatic Gear Vibrator



XGT-8

XGT-16

Feature

**Product Features**

Vibration intensity can be adjusted based on air pressure, can immediately start, stop, fast, low-noise, vibration force, security.

**Application**

Feed material conveyor, vibrating screening, vibrating hopper, to help fill packaging, foundry sand mold vibration.

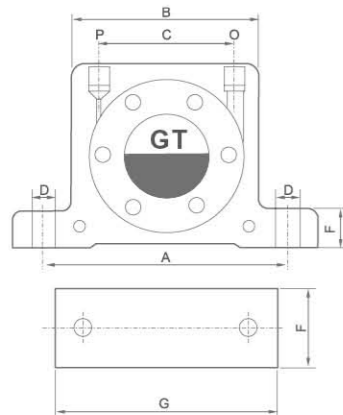
**Works**

Copper eccentric gear installed counterweight impact at intake charge into the gear thrust gear rotates, the eccentric rotation of the centrifugal weight with vibration, the gear driven by a bearing, low noise.

Specification

Model	Frequency(V.P.M)			Vibration power(N)			Air consumption(L/min)		
	0.2Mpa	0.4Mpa	0.6Mpa	0.2Mpa	0.4Mpa	0.6Mpa	0.2Mpa	0.4Mpa	0.6Mpa
XGT-8	34.850	42.000	45.500	980	2.100	2.800	46	80	112
XGT-10	27.500	35.000	37.500	840	1.390	2.400	46	80	112
XGT-13	26.000	30.000	33.000	1.400	2.440	3.730	120	200	290
XGT-16	17.000	21.500	24.000	1.220	2.090	3.160	120	200	290
XGT-20	17.000	20.000	23.000	2.170	4.040	5.520	185	325	455
XGT-25	12.000	15.500	17.000	2.120	3.510	5.070	185	325	455
XGT-32	13.000	14.000	16.000	3.380	5.430	7.540	330	530	745
XGT-36	7.800	10.000	13.000	3.300	5.000	7.150	330	530	745
XGT-40	7.500	8.800	9.500	4.350	7.350	9.850	408	428	680
XGT-48	5.800	7.500	9.700	4.950	7.750	10.6007	408	428	680
XGT-60	4.758	6.530	8.515	5.700	9.800	11.150	505	600	920

Overall Dimensions



Dimension Sheet

Model	A	B	C	D	E	F	G	P/O
XGT-8	68	50	28	7	12	35	86	1/8
XGT-10	68	50	28	7	12	35	86	1/8
XGT-13	90	65	39	9	16	43	113	1/4
XGT-16	90	65	39	9	16	43	113	1/4
XGT-20	104	82	56	9	17	56	128	1/4
XGT-25	104	82	56	9	17	56	128	1/4
XGT-32	130	103	76	11	21	73	160	3/8
XGT-36	130	103	76	11	21	73	160	3/8
XGT-40	152	122	85	18	27	80	194	3/8
XGT-48	152	122	85	18	27	80	194	3/8
XGT-60	195	140	96	21	30	95	240	1/2

## XK Series Pneumatic Ball Vibrator



XK-10

XK-16

Feature

**Product Features**

Vibration intensity according to the pressure regulator, affordable, long life, safe, can be used in damp, dust and explosion sites.

**Application**

Feed material conveyor, vibrating screening, vibrating hopper, to help fill packaging, foundry sand mold vibration.

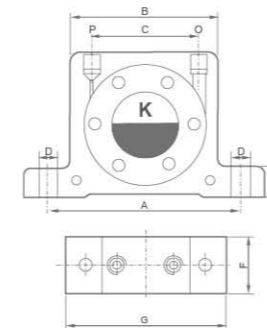
**Works**

Means of precision steel sleeve and the ball, the outer shell sealed by a special aluminum alloy, to promote the use of air charged into the rotary sleeve in the steel ball weigh ball and the distance between the center of the centrifugal force generated vibration.

Specification

Model	Frequency(V.P.M)			Vibration power(N)			Air consumption(L/min)		
	0.2Mpa	0.4Mpa	0.6Mpa	0.2Mpa	0.4Mpa	0.6Mpa	0.2Mpa	0.4Mpa	0.6Mpa
XK-8	22.500	27.250	34.100	245	465	700	90	150	190
XK-10	22.500	27.250	34.100	245	465	700	90	150	190
XK-13	13.250	17.500	19.000	440	820	1.200	100	190	270
XK-16	13.250	17.500	19.000	440	820	1.200	100	190	270
XK-20	10.000	12.750	14.111	950	1.675	2.000	150	270	400
XK-25	10.000	12.750	14.111	950	1.675	2.000	150	270	400
XK-32	7.500	9.350	11.000	2000	3.150	4.000	270	460	680
XK-36	7.500	9.350	11.000	2000	3.150	4.000	270	460	680

Overall Dimensions



Dimension Sheet

Model	A	B	C	D	E	F	G	P/O
XK-8	68	50	28	7	12	22	86	1/4
XK-10	68	50	28	7	12	22	86	1/4
XK-13	90	65	39	9	16	27	113	1/4
XK-16	90	65	39	9	16	27	113	1/4
XK-20	104	82	57	9	17	38	128	1/4
XK-25	104	82	57	9	17	38	128	1/4
XK-32	130	103	76	11	21	50	160	3/8
XK-36	130	103	76	11	21	50	160	3/8

## XR Series Roller Vibrator



XR-50

Feature

This small pneumatic vibrator design is simple, but still gives a strong centrifugal force. Body made from an extruded aluminum, refined steel roll in which the scrolling. This steel roller by the two special high-impact plastic cover positioning. The housing has two horizontal and two vertical holes, making installation easy. Air into two mutually perpendicular intake of an entry. The two air intakes for the standard pipe thread. Is not a block intake, supplied with a pipe plug.

Specification

Model	Frequency(V.P.M)			Vibration power(N)			Air consumption(L/min)		
	0.2Mpa	0.4Mpa	0.6Mpa	0.2Mpa	0.4Mpa	0.6Mpa	0.2Mpa	0.4Mpa	0.6Mpa
XR-50	25.150	35.150	36.150	1.175	2.955	4.2550	1.550	1.450	1.950
XR-65	19.150	21.150	26.150	2.755	4.855	6.1550	2.150	3.100	4.150
XR-80	15.650	18.650	19.150	3.150	6.125	7.450	4.500	4.350	5.750
XR-100	11.050	14.150	15.150	3.765	6.750	8.955	5.600	5.550	7.350

### XNTP Series Piston Reciprocating Type Ball Vibrator



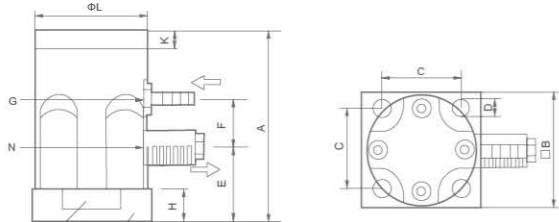
Feature

Big power with lower noise.  
 Standard frequency is from 43 to 146 times per minute.  
 Excitation force is from 150 N to 2039 N.  
 The frequency and vibration amplitude can be adjusted via regulating the working pressure.  
 The normal maximum working pressure is 150 degrees centigrade (We can also make special type, such as 200 degrees centigrade)  
 The pneumatic hammer can be used for severe environment.

Specification

Model	Frequency(V.P.M)			Vibration Power(N)			Air Consumption(L/min)
	0.2MPa	0.4MPa	0.6MPa	0.2MPa	0.4MPa	0.6MPa	
XNTP25	5.840	6.950	8.780	265	435	825	33-108
XNTP32	2.950	4.075	5.045	285	605	925	50-198
XNTP48	2.610	3.450	4.310	780	1.300	2.030	96-336

Overall Dimensions



Dimension Sheet

Model	A	B	C	D	E	F	G	H	K	L	N
XNTP25	90	60	46	6.5	36	14.5	G1/8"	15	8	51	G1/8"
XNTP32	140	75	51	11	48	32	G1/4"	20	10	70	G1/4"
XNTP48	194	100	78	13	60	51	G3/8"	25	15	95	G3/8"

### XFP-M Series Piston type Pneumatic Hammer



Feature

**Product Features**  
 Big power with lower noise  
 Standard frequency is from 10 to 60 times per minute. Excitation force is from 484 N to 13800 N  
 The frequency and vibration amplitude can be adjusted via regulating the working pressure.  
 The normal maximum working pressure is 150 degrees centigrade.  
 (We can also make special type, such as 200 degrees centigrade).  
 The pneumatic hammer can be used for severe environment.

**Application**  
 Hopper feed, Casting industry, Pipelining Compaction, Screening, Conveyer, etc

**Structure**  
 Aluminum shell with special high grade grease, long life time, is suitable for different application situation

Specification

Model	Frequency x 1000		Vibration Power(N)		Air Consumption(L/min)
	0.2MPa	0.6MPa	0.2MPa	0.6MPa	0.2MPa
XFP-12-M	5	6.7	34	74	0.5
XFP-18-M	4	5.9	68	188	4
XFP-25-M	3	4.2	142	504	23
XFP-35-M	3	4.6	248	1080	24

### XBVP Series Piston Type Pneumatic Hammer



Feature

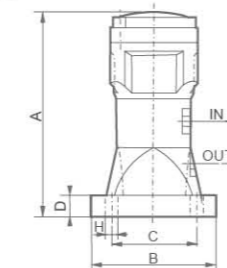
**Product Features**  
 Vibration intensity can be adjusted based on air pressure, can immediately start, stop, fast, low-noise, vibration force, security.

**Application:**  
 Feed material conveyor, vibrating screening, vibrating hopper, to help fill packaging, foundry sand mold vibration.

Specification

Model	Requency(V.P.M)			Vibration power(N)			Air Consumption(L/min)
	2MPa	4MPa	6MPa	2MPa	4MPa	6MPa	
XBVP-30C	1760	2300	2850	195	380	560	230
XBVP-40C	1330	1670	1870	270	530	720	250
XBVP-50C	1000	1220	1350	400	760	1000	270

Overall Dimensions



Dimension Sheet

Model	A	B	C	D	H	IN	OUT
XBVP-30C	128	90	68	18	12	1/4"	1/4"
XBVP-40C	160	100	78	18	12	1/4"	1/4"
XBVP-50C	208	140	105	20	16	1/4"	1/4"

### XSK Series Pneumatic Percussion Hammer



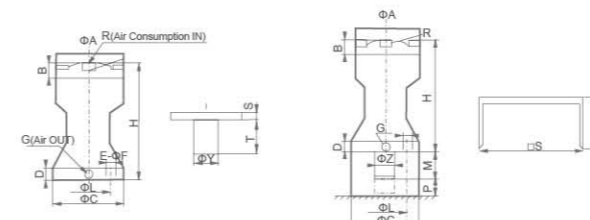
Feature

The main characteristics are: magnetic impact of large powder falling effect; air consumption, low operating cost, energy-saving effect is good; percussion interval adjustable; quality, reliable, low failure rate; structure is simple, easy removal; innovative designs, chic; piston impact resistance, (can be customized explosion proof). Widely used in pesticides, pharmaceuticals, chemicals, cement, dyes, pigments, food, electronics, building materials, mining, environmental protection and other industries, is powerful powder processing line auxiliary equipment.

Specification

Model	Operating pressure (MPa)	Air Consumption(L/min)	Wallop kgm/sec
XSK-30	0.3-0.7	0.028	~0.75
XSK-40	0.3-0.7	0.082	~2.2
XSK-60	0.3-0.7	0.228	~7.4
XSK-80	0.4-0.5	0.455	~16.4
XSK-100	0.5-0.7	1.012	~30.0

Overall Dimensions



Dimension Sheet

Model	A	B	C	D	E	G	H	L	S	T	Y	R
SK-30	75	10	82	13	9	1/8	132	68	6	50	27	1/4
SK-40	90	12	97	18	11	1/4	162	78	10	60	34	1/4
SK-60	121	13	143	19	15	1/4	215	100	10	60	48	1/4
SK-80	160	17	170	20	17	3/8	260	140	14	90	70	3/8
SK-100	200	18	200	23	17	3/8	318	160	18	90	70	3/8





Other Solenoid Valve / Solenoid Valve Accessories

Model	Product	Specification	Model	Product	Specification
4VXC-08		Valve type:5 port 2 way Orifice size:25mm <sup>2</sup> (CV=1.40) Fluid Air(to be filtered by 40μ filter element) Acting Inner guide type Pressure range:0.25~1.0MPa Proof pressure:1.2MPa Temperature:5~50°C Voltage range:-10%~+10% Power consumption:AC:5.5VA DC:4.8W Insulation&Protection:F Class & IP65 Max frequency:5 cyclec Min activating time:0.05 secretary	XR2 Valve Group		Fluid medium:Compress Air Motion pattern:Direct acting Type:Normal Close,(2/2,3/2) Orifice:1.2mm Connection port:G1/8" Working pressure:0~0.8Mpa Working temperature:-20℃ ~80℃ Voltage Range:DC6~220V, AC24~220V,50/60Hz±10% Material of Body:Aluminum alloy Seal:NBR
XCZ-110-10-A Small Valve Group		Fluid medium:Compress Air Pattern:Direct acting Type:Normal Close,Two-position Three-way Orifice:0.7mm Connection port:M5 Working pressure:0~0.8Mpa Working temperature:0~60℃ Voltage Range:DC12V~DC24V,±10% Power:≤3W Material of Body:Aluminum Seal:FPM	DL-6A DL-6B DL-6K DL Orifice Adjustable Steam Solenoid Valve		Medium:Water,Steam Pattern:Direct acting Type:Normal Close Orifice:2.5mm(DL-6A,DL-6B)0~2.5mm(DL-6K) Connection port:G1/4",G1/8" Working pressure:0~0.8Mpa Ambient temperature:0.1~180℃ Voltage:AC24,AC110V,AC220-240V, 50/60Hz,±10% Material of Body:Stainless Steel+Brass Seal:PTFE
Q22XD-2L Q23XD-2L		Port size: M10×1,G1/8" Use Pressure:0.15 to 0.8Mpa Apply Temperature:-5℃ ~50℃	F17 Petrol Solenoid Valve		Fluid medium:Petrol and solvents Motion Pattern:Direct acting Type:Normal Close,Two-position Two-way Orifice:Φ1.8mm,Φ3mm Connection port:Φ4 hose Working pressure:0~0.35Mpa Working temperature:-40℃ ~80℃ Voltage Range:DC12V DC24V Material of Body:POM Seal:VITON
3VKZF-15/10~25/20 3AKZF-15/10~25/20		Working Medium:Air Motion Pattern:Stop Type Aperture of Flow Rate:3V:16mm/25mm 3A:16mm/25mm Port Size,G1/2" / G3/8",G1" / G3/4", Working-pressure:0~1.0MPa Max. Pressure Resistance:1.5MPa Voltage Range:-10%~+10% Material of Body:Aluminum	RSC-1 RSC-2		Medium:Water,Gas Medium Temperature:0~100℃ Environment Temperature:0~40℃ Action method:Direct drive Pressure:Normally close 0~8bar Body material:PP 1/8" black 1/4" white Sealing material:EPDM Heat resistance grade:class B 130℃ Continuous Service:100% Wire Length:30cm(12")
XC601 5/2 3/2 (Armature)		Often used for 4V110 etc and small-sized special electromagnetism valves.	XC603 5/2 3/2 (Armature)		Often used for 4V210, 4V310,4V410 etc valves.
XCB601, 5/2 3/2 (Armature With Base)		Often used for 4V110 etc and small-sized special electromagnetism valves.	XCB603, 5/2 3/2 (Armature With Base)		Often used for 4V210, 4V310,4V410 etc valves.


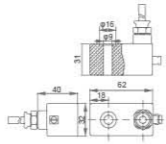

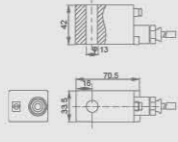
Solenoid Valve Accessories

Model	Product	Specification	Model	Product	Specification
Coil-110		Coil aperture,Height: Φ8×31 Applicable power and Voltage AC 6VA 12V-220V DC 3W 6V-110V	Coil-210		Coil aperture,Height: Φ9×29.5 Applicable power and Voltage AC 6VA 12V-220V DC 3W 6V-110V
DIN 43650C-AC or DC (Connectors)		Distance:9.4mm Form:2+1 GND Protection Class:IP65 (60529 Situation of IEC) Working Voltage:AC250V DC300V Nominal Current:10A Contact Resistance:≤5Ω Max.Conductor Section:3×0.75mm <sup>2</sup> Fixing Screw:M3×25	DIN 43650B-AC or DC (Connectors)		Distance:11mm Form:2+1 GND Protection Class:IP65 (60529 Situation of IEC) Working Voltage:AC250V DC300V Nominal Current:10A Contact Resistance:≤5mΩ Max.Conductor Section:3×1.5mm <sup>2</sup> Fixing Screw:M3×30
DIN 43650A (Connectors)		Distance:18mm Form:2+1 GND Protection Class:IP65(60529 Situation of IEC) Working Voltage:AC250V DC300V Nominal Current:10A Contact Resistance:≤5mΩ Max.Conductor Section:3×1.5mm <sup>2</sup> Fixing Screw:M3×28	2V,2P Series Coil		Coil Aperture,height: Φ9×29.5 Applicable Power And Voltage: AC 8VA 12-220V DC 6 W 6V-110V
2W (UD) Series Coil UD-08		Coil Aperture,height: Φ14X31 Applicable Power And Voltage: AC 28VA 24-380V DC 12 W 6-380V	2W (UD) Coil UD-15		Coil aperture,Height: Φ16×37 Applicable power and Voltage AC 18VA 24V-380V DC 16W 12V-380V
2W (UW) Series Coil		Coil Aperture,height: Φ16x17 Applicable Power And Voltage: AC 28VA 24-380V DC 24 W 24-380V	2W (2L,US) Large Aperture Coil US-H		Coil Aperture,height: Φ23X55 Applicable Power And Voltage: AC 28VA 24-380V DC 24 W 24-380V
2W(2L,US) Large Aperture Plastic Capsulation Coil		Coil Aperture,height: Φ22x55 Applicable Power And Voltage: AC 28VA 24-380V DC 24 W 24-380V	AB410A		Coil Aperture,height: Φ16X38 Applicable Power And Voltage: AC 28VA 24-380V DC 18 W 12-220V
PU Series Coil		Coil Aperture,height: Φ14.5x42 Applicable Power And Voltage: AC 15VA 24-380V DC 12.5 W 12-110V	VX Series Coil		Coil aperture,Height: Φ11×35 Applicable power and Voltage AC 13VA 12V-380V DC 8W 6V-380V

**Solenoid Valve Accessories**

Model	Product	Specification	Model	Product	Specification
PU220 Series Diaphragm		PU220-03A PU220-04A PU220-06A PU220-08A	PU225 Series Diaphragm		PU225-03A PU225-04A PU225-06A PU225-08A
2W Series Diaphragm		2W-160-15 2W-200-20 2W-250-25 2W-350-35 2W-400-40 2W-500-50	2L(US) Series Piston		2L-170-10/15/20 2L-200-25 2L-350-35/40 2L-500-50

**Explosion-proof Coil & Timer**

Model	Product	Specification	Model	Product	Specification
Product No. XC280 Product Type 0980,0981					
Product No. XC281 Product Type 1380,1381		 Supply voltage			

Normal Voltage	AC220V,AC110V,AV24V,DC24V,DV12 Other Voltage can be customized
Normal Power	AC5.5VA,DC5W Other Power can be customized
Explosion-proof level	Exm I / II T4
Connection Type	Connector Type
Applicability	EX-proof Solenoid Valve
Normal Voltage	AC220V,AC110V,AV24V,DC24V,DV12V Other Voltage can be customized
Normal Power	AC5.5VA,DC5W Other Power can be customized
Explosion-proof level	Exm I / II T4
Connection Type	Connector Type Cable
Applicability	EX-proof Solenoid Valve
Supply voltage	24..240V AC/DC-50Hz/60Hz for"CE"marked
Absorption current	Timer
Operating temperature	4 mA max
Class protection	-10℃ +50℃
Switch holding voltage	IP65-EN60529
Switch capacity	400V Max
Inrush current	1A
Duty cycle	10A for 10ms
Switch Life	100% ED
Time ON	3×10 <sup>8</sup>
Time OFF	From 0.5 to 10s.
Indicators	From 0.5 to 45s.
Manual override	Yellow LED
Termination	Test
	DIN43650A

Valve  
Timer-1



**Pneumatic Accessories**

Users usually overlook these accessories, but they are most necessary element in pneumatic system. XCPC knows the importance of these small parts, we never give up the high quality standard. The pneumatic accessories we can offer is plastic fittings, brass fittings, quick connectors, pipe fittings, quick couplers, air pipe(PU/PE/PA) and air guns etc.

